

PROTECTA® FR PIPE WRAP

INSTALLATION INSTRUCTIONS



INDEX FOR FIRE CLASSIFICATIONS

Steel pipes with foam insulation in rigid floors	pages 2-3
Copper pipes with foam insulation in rigid floors	pages 3-4
Alupex pipes with foam insulation in rigid floors	pages 4-5
PVC, PE & PP pipes in rigid floors	pages 5-6
PVC, PE & PP pipes with foam insulation in rigid floors	pages 6-7
Plastic pipes with cables (conduits) in rigid floors	page 7
Composite plastic pipes in rigid floors	pages 8-11
PEX pipe-in-pipes in rigid floors	page 12
Steel pipes with foam insulation in rigid walls	pages 12-13
Copper pipes with foam insulation in rigid walls	pages 13-14
Alupex pipes with foam insulation in rigid walls	page 14
PVC, PE & PP pipes in rigid walls	pages 14-15
Plastic pipes with cables (conduits) in rigid walls	page 15
PVC, PE & PP pipes with foam insulation in rigid walls	page 16
Composite plastic pipes in rigid walls	pages 17-20
PEX pipe-in-pipes in rigid walls	page 21

GENERAL PRODUCT DESCRIPTION

Protecta® FR Pipe Wrap is designed to maintain the fire resistance of fire separating walls and floors when these are breached by plastic pipes or metal pipes with continuous combustible insulation. Each pipe wrap consists of a graphite based reactive intumescent strip, which reacts to heat and closes the opening left by the softening plastic pipe or pipe insulation in a fire.

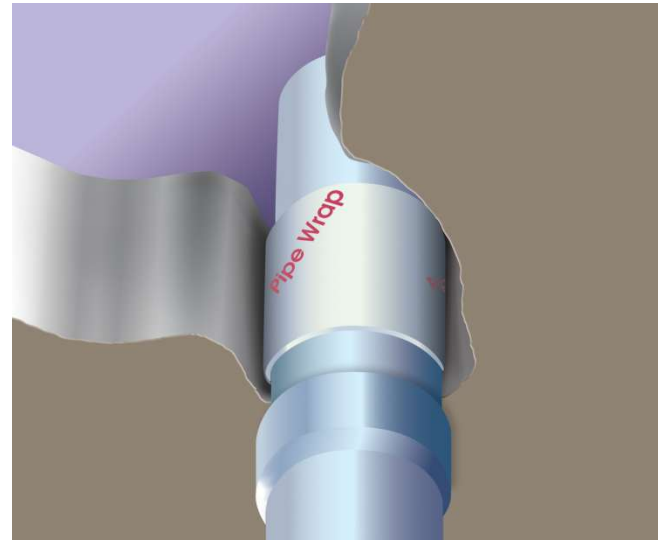
GENERAL GUIDE

Minimum separations and limitations: Services can be sealed as specified in the detailed drawings on pages 2 to 21. The minimum permitted separation between adjacent seals/apertures is 30 mm.

Supporting constructions: Rigid walls must have a minimum thickness of 150 mm and comprise of concrete, aerated concrete or masonry, with a minimum density of 650 kg/m³. Rigid floors must have a minimum thickness of 150 mm and comprise of aerated concrete or concrete with a minimum density of 650 kg/m³.

The supporting construction must be classified in accordance with EN 13501-2 for the required fire resistance period. Services in floors should be supported at maximum 450 mm from the top face. Services in walls should be supported at maximum 270 mm from both faces of the wall.

Services: Metallic pipes through Protecta® FR Pipe Wrap may be used in all angles between 90° and 45° in all directions, subject to the pipe wraps being installed fully inside the supporting construction. Where steel pipes are mentioned, this includes iron pipes. Where PVC pipes are mentioned, this includes PVC-U, PVC-C and similar if the pipe is according to EN 1329-1, EN 1452-2, EN 1453-1 and EN 1566-1. Where PP pipes are mentioned, this includes PP-MV, PP-H, PP-R and similar if the pipe is according to EN 1451-1 or DIN 8077/8078. Where PE pipes are mentioned, this includes PE-LD, PE-MD, PE-HD, PE-X and similar according to EN 1519-1, EN 12201-2 or EN 12666-1, ABS according to EN 1455-1 and pipes made from SAN+PVC according to EN 1565-1.



INSTALLATION

1. These installation instructions are for cast or friction fitted Protecta® FR Pipe Wraps. If the pipe wraps are to be installed in a drywall, or in a larger aperture i.e. the annular gap width around the pipe wrap is above 10 mm, please refer to installation instructions for Protecta® FR Board or EX Mortar.
2. If the pipe wrap is to be friction fitted, ensure the faces of the aperture opening are free of dust and any other contaminants.
3. If the pipe wrap is to be installed in hollow floor slabs or boards, ensure there is sufficient thickness of concrete below the void for the depth of the fire seal. Where this is not the case, tubular voids should be plugged with Protecta® EX Mortar before sealing the aperture.
4. The pipe wraps are supplied in 25 metre single layer rolls, or ready-made multiple layers in plastic sleeves. If the latter, please check the number of layers and the width are the same as specified in the installation detail. If they are not, use 25 metre rolls (please see detailed drawings of installation methods on pages 2 to 21, and the technical data sheet for width and layers of ready-made pipe wraps).
5. In floors, only one pipe wrap is required to be installed flush with the soffit so that the edge of the wrap is visible from the underside. For walls it is normal to fit a wrap on both sides of the wall, again with the edge just visible.
6. Fix either a suitable ready-made pipe wrap around the service penetration and fasten with the tape, or use the pipe wrap rolls and build up the necessary number of layers and fasten with a tape or self-adhesive (special version). Make sure it is as tight as possible in order to prevent any excess opening between the pipe wrap and the service penetration(s), then slide the fixed pipe wrap(s) into position.
7. The pipe wrap(s) may be cast, or friction fitted, where the aperture fit the outside diameter of the wrapped service penetration. A gap around the pipe wrap of maximum 10 mm is allowed, subject to the gap being filled with Protecta® FR Acrylic to the full depth of the pipe wrap.

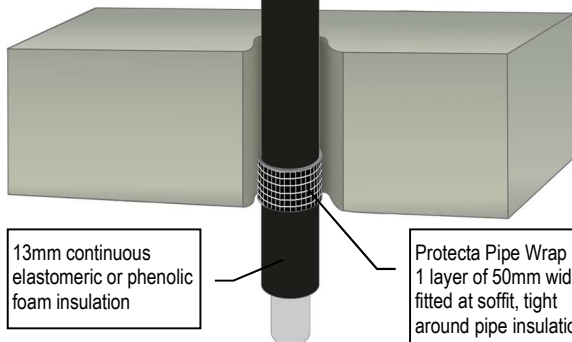
INSULATED STEEL PIPES FIRE RESISTANCE EI 180 C/U (E 180)

Protecta Pipe Wrap
cast or friction fitted

≥ 150MM RIGID FLOORS

A gap around the wrap of ≤ 10mm
is allowed, filled with Protecta FR
Acrylic to the full depth of the wrap

Steel pipe
≤ Ø40mm



24/0957-A.2.3-8

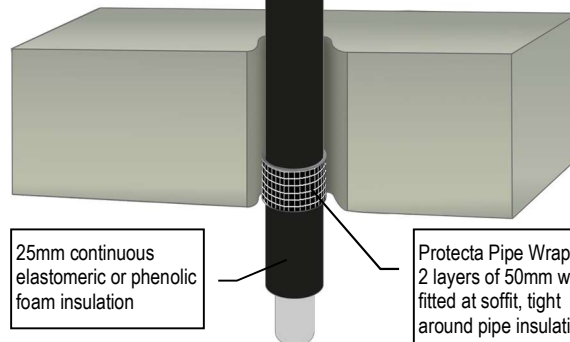
INSULATED STEEL PIPES FIRE RESISTANCE EI 240 C/U (E 240)

Protecta Pipe Wrap
cast or friction fitted

≥ 150MM RIGID FLOORS

A gap around the wrap of ≤ 10mm
is allowed, filled with Protecta FR
Acrylic to the full depth of the wrap

Steel pipe
≤ Ø40mm



24/0957-A.2.3-9

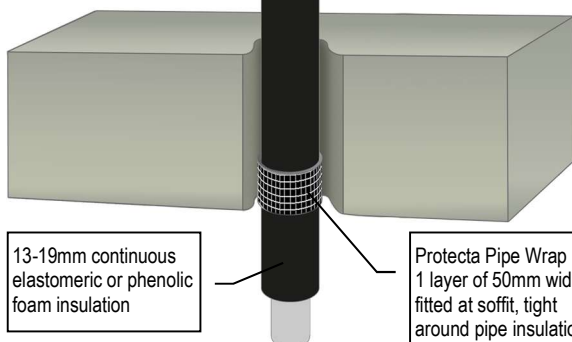
INSULATED STEEL PIPES FIRE RESISTANCE EI 120 C/U (E 180)

Protecta Pipe Wrap
cast or friction fitted

≥ 150MM RIGID FLOORS

A gap around the wrap of ≤ 10mm
is allowed, filled with Protecta FR
Acrylic to the full depth of the wrap

Steel pipe
≤ Ø165mm



24/0957-A.2.3-10

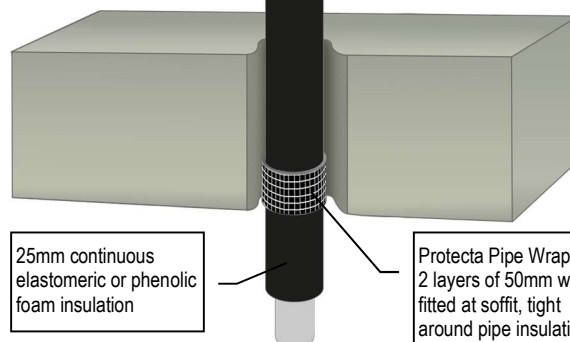
INSULATED STEEL PIPES FIRE RESISTANCE EI 120 C/U (E 240)

Protecta Pipe Wrap
cast or friction fitted

≥ 150MM RIGID FLOORS

A gap around the wrap of ≤ 10mm
is allowed, filled with Protecta FR
Acrylic to the full depth of the wrap

Steel pipe
≤ Ø324mm



24/0957-A.2.3-11

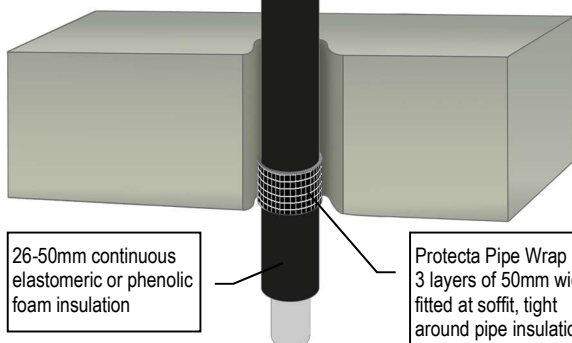
INSULATED STEEL PIPES FIRE RESISTANCE EI 120 C/U (E 120)

Protecta Pipe Wrap
cast or friction fitted

≥ 150MM RIGID FLOORS

A gap around the wrap of ≤ 10mm
is allowed, filled with Protecta FR
Acrylic to the full depth of the wrap

Steel pipe
≤ Ø324mm



24/0957-A.2.3-12

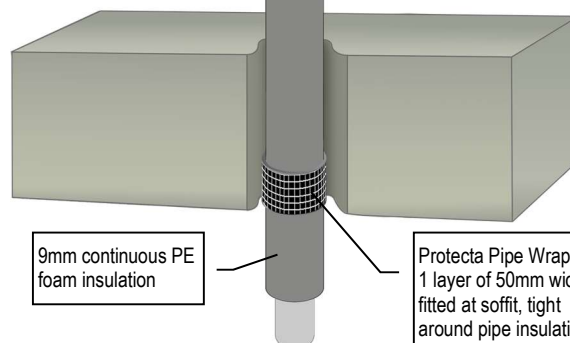
INSULATED STEEL PIPES FIRE RESISTANCE EI 180 C/U (E 180)

Protecta Pipe Wrap
cast or friction fitted

≥ 150MM RIGID FLOORS

A gap around the wrap of ≤ 10mm
is allowed, filled with Protecta FR
Acrylic to the full depth of the wrap

Steel pipe
≤ Ø12mm



24/0957-A.2.3-13

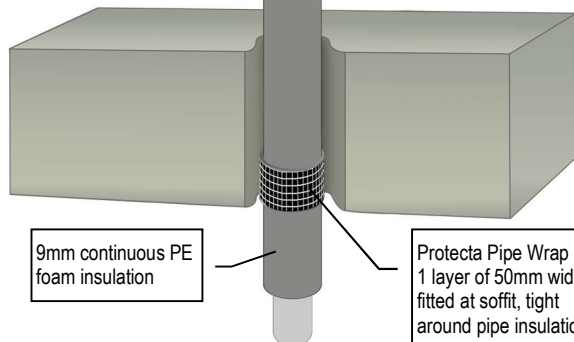
INSULATED STEEL PIPES FIRE RESISTANCE EI 60 C/U (E 180)

Protecta Pipe Wrap
cast or friction fitted

≥ 150MM RIGID FLOORS

A gap around the wrap of ≤ 10mm
is allowed, filled with Protecta FR
Acrylic to the full depth of the wrap

Steel pipe
≤ Ø76mm



9mm continuous PE
foam insulation

Protecta Pipe Wrap
1 layer of 50mm wide
fitted at soffit, tight
around pipe insulation

24/0957-A.2.3-14

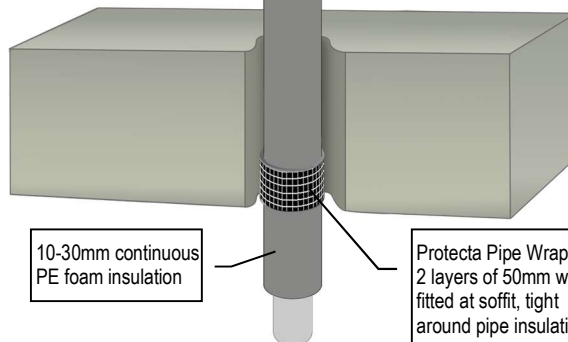
INSULATED STEEL PIPES FIRE RESISTANCE EI 60 C/U (E 180)

Protecta Pipe Wrap
cast or friction fitted

≥ 150MM RIGID FLOORS

A gap around the wrap of ≤ 10mm
is allowed, filled with Protecta FR
Acrylic to the full depth of the wrap

Steel pipe
≤ Ø76mm



10-30mm continuous
PE foam insulation

Protecta Pipe Wrap
2 layers of 50mm wide
fitted at soffit, tight
around pipe insulation

24/0957-A.2.3-15

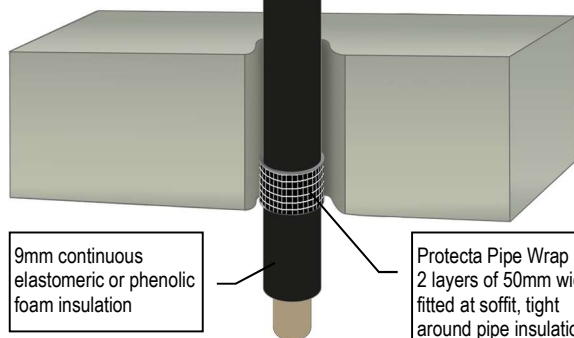
INSULATED COPPER PIPES FIRE RESISTANCE EI 240 C/C (E 240)

Protecta Pipe Wrap
cast or friction fitted

≥ 150MM RIGID FLOORS

A gap around the wrap of ≤ 10mm
is allowed, filled with Protecta FR
Acrylic to the full depth of the wrap

Copper pipe
≤ Ø12mm



9mm continuous
elastomeric or phenolic
foam insulation

Protecta Pipe Wrap
2 layers of 50mm wide
fitted at soffit, tight
around pipe insulation

24/0957-A.2.3-1

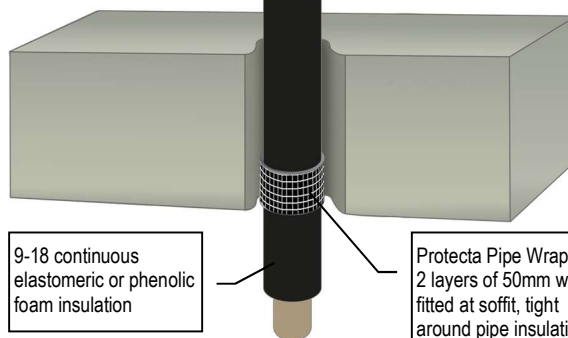
INSULATED COPPER PIPES FIRE RESISTANCE EI 60 C/C (E 180)

Protecta Pipe Wrap
cast or friction fitted

≥ 150MM RIGID FLOORS

A gap around the wrap of ≤ 10mm
is allowed, filled with Protecta FR
Acrylic to the full depth of the wrap

Copper pipe
≤ Ø54mm



9-18 continuous
elastomeric or phenolic
foam insulation

Protecta Pipe Wrap
2 layers of 50mm wide
fitted at soffit, tight
around pipe insulation

24/0957-A.2.3-2

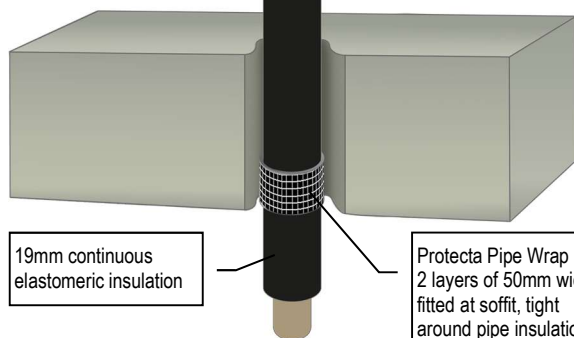
INSULATED COPPER PIPES FIRE RESISTANCE EI 120 C/C (E 180)

Protecta Pipe Wrap
cast or friction fitted

≥ 150MM RIGID FLOORS

A gap around the wrap of ≤ 10mm
is allowed, filled with Protecta FR
Acrylic to the full depth of the wrap

Copper pipe
≤ Ø54mm



19mm continuous
elastomeric insulation

Protecta Pipe Wrap
2 layers of 50mm wide
fitted at soffit, tight
around pipe insulation

24/0957-A.2.3-3

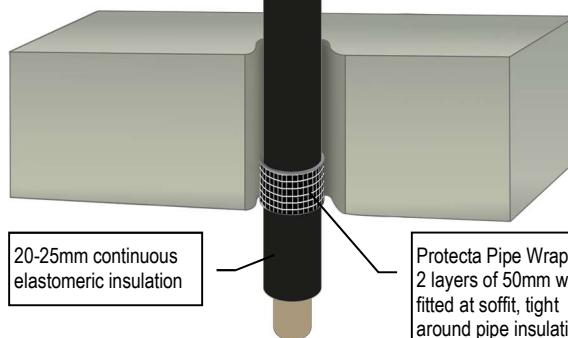
INSULATED COPPER PIPES FIRE RESISTANCE EI 60 C/C (E 180)

Protecta Pipe Wrap
cast or friction fitted

≥ 150MM RIGID FLOORS

A gap around the wrap of ≤ 10mm
is allowed, filled with Protecta FR
Acrylic to the full depth of the wrap

Copper pipe
≤ Ø54mm



20-25mm continuous
elastomeric insulation

Protecta Pipe Wrap
2 layers of 50mm wide
fitted at soffit, tight
around pipe insulation

24/0957-A.2.3-4

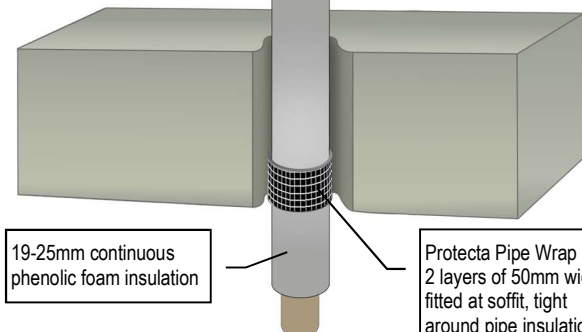
INSULATED COPPER PIPES FIRE RESISTANCE EI 120 C/C (E 180)

Protecta Pipe Wrap
cast or friction fitted

≥ 150MM RIGID FLOORS

A gap around the wrap of ≤ 10mm
is allowed, filled with Protecta FR
Acrylic to the full depth of the wrap

Copper pipe
≤ Ø54mm



19-25mm continuous
phenolic foam insulation

Protecta Pipe Wrap
2 layers of 50mm wide
fitted at soffit, tight
around pipe insulation

24/0957-A.2.3-5

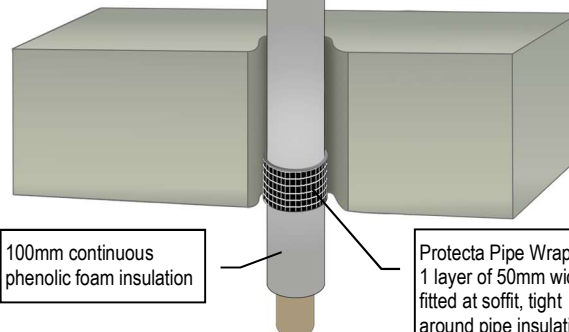
INSULATED COPPER PIPES FIRE RESISTANCE EI 45 C/C (E 45)

Protecta Pipe Wrap
cast or friction fitted

≥ 150MM RIGID FLOORS

A gap around the wrap of ≤ 10mm
is allowed, filled with Protecta FR
Acrylic to the full depth of the wrap

Copper pipe
≤ Ø159mm



100mm continuous
phenolic foam insulation

Protecta Pipe Wrap
1 layer of 50mm wide
fitted at soffit, tight
around pipe insulation

24/0957-A.2.3-6

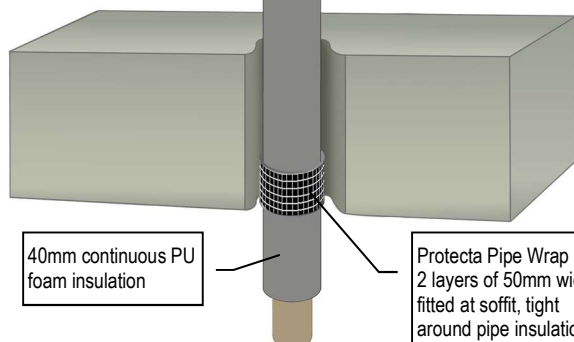
COPPER OR STEEL PIPES FIRE RESISTANCE EI 60 C/C (E 120)

Protecta Pipe Wrap
cast or friction fitted

≥ 150MM RIGID FLOORS

A gap around the wrap of ≤ 10mm
is allowed, filled with Protecta FR
Acrylic to the full depth of the wrap

Copper or steel
pipe ≤ Ø54mm



40mm continuous PU
foam insulation

Protecta Pipe Wrap
2 layers of 50mm wide
fitted at soffit, tight
around pipe insulation

24/0957-A.2.3-7

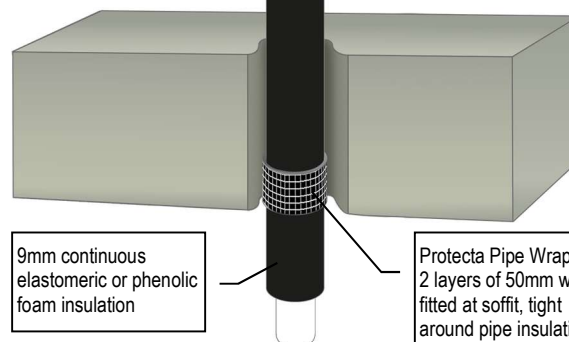
INSULATED ALUPEX PIPES FIRE RESISTANCE EI 240 C/C (E 240)

Protecta Pipe Wrap
cast or friction fitted

≥ 150MM RIGID FLOORS

A gap around the wrap of ≤ 10mm
is allowed, filled with Protecta FR
Acrylic to the full depth of the wrap

Alupex pipe
≤ Ø16mm



9mm continuous
elastomeric or phenolic
foam insulation

Protecta Pipe Wrap
2 layers of 50mm wide
fitted at soffit, tight
around pipe insulation

24/0957-A.2.3-16

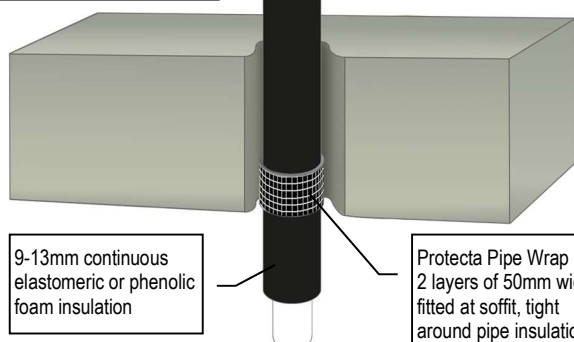
INSULATED ALUPEX PIPES FIRE RESISTANCE EI 180 C/C (E 240)

Protecta Pipe Wrap
cast or friction fitted

≥ 150MM RIGID FLOORS

A gap around the wrap of ≤ 10mm
is allowed, filled with Protecta FR
Acrylic to the full depth of the wrap

Alupex pipe
≤ Ø25mm



9-13mm continuous
elastomeric or phenolic
foam insulation

Protecta Pipe Wrap
2 layers of 50mm wide
fitted at soffit, tight
around pipe insulation

24/0957-A.2.3-17

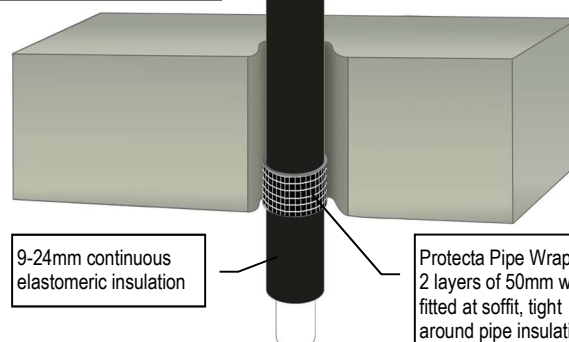
INSULATED ALUPEX PIPES FIRE RESISTANCE EI 120 C/C (E 120)

Protecta Pipe Wrap
cast or friction fitted

≥ 150MM RIGID FLOORS

A gap around the wrap of ≤ 10mm
is allowed, filled with Protecta FR
Acrylic to the full depth of the wrap

Alupex pipe
≤ Ø75mm



9-24mm continuous
elastomeric insulation

Protecta Pipe Wrap
2 layers of 50mm wide
fitted at soffit, tight
around pipe insulation

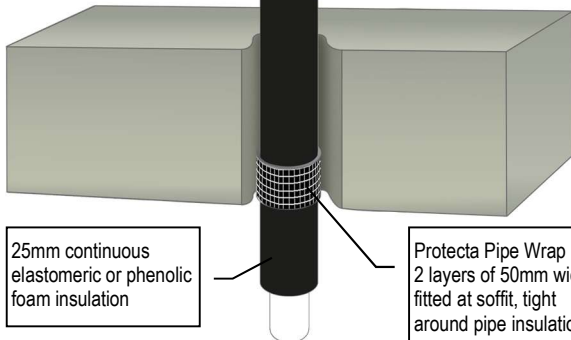
24/0957-A.2.3-18

INSULATED ALUPEX PIPES FIRE RESISTANCE EI 180 C/C (E 180)

Protecta Pipe Wrap
cast or friction fitted

≥ 150MM RIGID FLOORS

A gap around the wrap of ≤ 10mm
is allowed, filled with Protecta FR
Acrylic to the full depth of the wrap

Alupex pipe
≤ Ø75mm

25mm continuous
elastomeric or phenolic
foam insulation

Protecta Pipe Wrap
2 layers of 50mm wide
fitted at soffit, tight
around pipe insulation

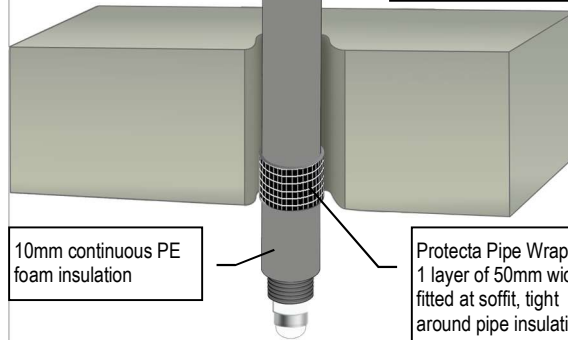
24/0957-A.2.3-19

LK PAL UNIVERSAL PIPES FIRE RESISTANCE EI 120 C/C (E 240)

Protecta Pipe Wrap
cast or friction fitted

≥ 150MM RIGID FLOORS

A gap around the wrap of ≤ 10mm
is allowed, filled with Protecta FR
Acrylic to the full depth of the wrap

Outer PP conduit ≤ Ø42mm
with wall thickness 2.0-2.5
mm with inner alupex pipe
≤ Ø32mm with wall
thickness 2.0-3.0mm

10mm continuous PE
foam insulation

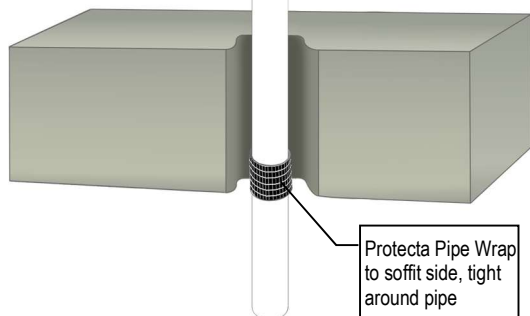
Protecta Pipe Wrap
1 layer of 50mm wide
fitted at soffit, tight
around pipe insulation

24/0957-A.2.3-20

PVC PIPES FIRE RESISTANCE EI 30-240
≥ 150MM RIGID FLOORS

Protecta Pipe Wrap
cast or friction fitted

Plastic
pipe

A gap around the
wrap of ≤ 10mm
is allowed, filled
with Protecta FR
Acrylic to the full
depth of the wrap

Protecta Pipe Wrap
to soffit side, tight
around pipe

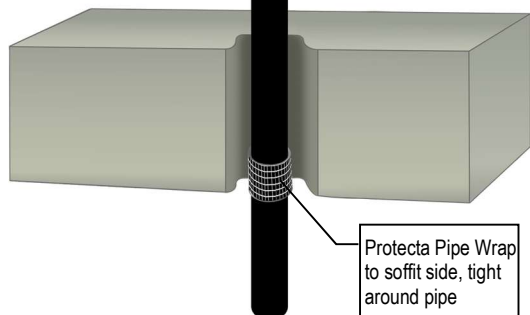
Services	Pipe Wall Thickness	FR Pipe Wrap	Classification
≤ Ø40mm PVC-U & PVC-C	1.8 – 3.7mm	50 x 1.8mm (1 layer)	EI 120 U/U (E 180 U/U)
≤ Ø80mm PVC-U & PVC-C	1.8 – 5.3mm	50 x 3.6mm (2 layers)	EI 240 U/C (E 240 U/C)
≤ Ø110mm PVC-U & PVC-C	2.4 – 6.6mm	50 x 3.6mm (2 layers)	EI 240 U/C (E 240 U/C)
≤ Ø125mm PVC-U & PVC-C	4.8 – 7.4mm	50 x 7.2mm (4 layers)	EI 60 U/U (E 60 U/U)
≤ Ø125mm PVC-U & PVC-C	2.6 – 7.4mm	50 x 7.2mm (4 layers)	EI 120 U/C (E 120 U/C)
≤ Ø160mm PVC-U & PVC-C	9.5mm	75 x 10.8mm (6 layers)	EI 30 U/U (E 120 U/U)
≤ Ø160mm PVC-U & PVC-C	3.2mm	50 x 10.8mm (6 layers)	EI 120 U/C (E 120 U/C)
≤ Ø160mm PVC-U & PVC-C	3.3 – 4.4mm	50 x 10.8mm (6 layers)	EI 90 U/C (E 90 U/C)
≤ Ø160mm PVC-U & PVC-C	4.5 – 9.5mm	50 x 10.8mm (6 layers)	EI 120 U/C (E 120 U/C)
≤ Ø160mm PVC-U & PVC-C	3.3 – 4.4mm	50 x 10.8mm (6 layers)	EI 120 C/C (E 120 C/C)
≤ Ø160mm PVC-U & PVC-C	4.5mm	50 x 10.8mm (6 layers)	EI 240 C/C (E 240 C/C)
≤ Ø200mm PVC-U & PVC-C	4.9 – 11.9mm	75 x 10.8mm (6 layers)	EI 120 C/C (E 120 C/C)
≤ Ø315mm PVC-U & PVC-C	7.7 – 12.1mm	75 x 18.0mm (10 layers)	EI 90 C/C (E 90 C/C)
≤ Ø400mm PVC-U & PVC-C	15.3mm	75 x 28.8mm (16 layers)	EI 60 C/C (E 60 C/C)

24/0957-A.2.1-1

PE PIPES FIRE RESISTANCE EI 60-240
≥ 150MM RIGID FLOORS

Protecta Pipe Wrap
cast or friction fitted

Plastic
pipe

A gap around the
wrap of ≤ 10mm
is allowed, filled
with Protecta FR
Acrylic to the full
depth of the wrap

Protecta Pipe Wrap
to soffit side, tight
around pipe

Services	Pipe Wall Thickness	FR Pipe Wrap	Classification
≤ Ø40mm PE, ABS & SAN+PVC	2.4 – 3.7mm	50 x 1.8mm (1 layer)	EI 240 U/U (E 240 U/U)
≤ Ø110mm PE, ABS & SAN+PVC	3.4 – 10.0mm	75 x 5.4mm (3 layers)	EI 240 U/U (E 240 U/U)
≤ Ø110mm PE, ABS & SAN+PVC	3.4 – 10.0mm	50 x 3.6mm (2 layers)	EI 120 U/C (E 120 U/C)
≤ Ø125mm PE, ABS & SAN+PVC	11.4mm	50 x 7.2mm (4 layers)	EI 240 U/U (E 240 U/U)
≤ Ø125mm PE, ABS & SAN+PVC	3.9 – 11.4mm	50 x 7.2mm (4 layers)	EI 240 U/C (E 240 U/C)
≤ Ø160mm PE, ABS & SAN+PVC	4.9 – 14.6mm	75 x 7.2mm (4 layers)	EI 120 U/U (E 120 U/U)
≤ Ø160mm PE, ABS & SAN+PVC	4.9 – 14.6mm	50 x 10.8mm (6 layers)	EI 120 U/C (E 120 U/C)
≤ Ø200mm PE, ABS & SAN+PVC	6.2 – 18.2mm	75 x 10.8mm (6 layers)	EI 120 C/C (E 120 C/C)
≤ Ø250mm PE, ABS & SAN+PVC	7.8mm	75 x 12.6mm (7 layers)	EI 180 C/C (E 180 C/C)
≤ Ø315mm PE, ABS, SAN+PVC	9.7 – 18.7mm	75 x 18.0mm (10 layers)	EI 60 C/C (E 60 C/C)

24/0957-A.2.1-2

PP PIPES FIRE RESISTANCE EI 30-240

≥ 150MM RIGID FLOORS

Services	Pipe Wall Thickness	FR Pipe Wrap	Classification
≤ Ø40mm PP	1.8 – 5.5mm	50 x 1.8mm (1 layer)	EI 120 U/U (E 120 U/U)
≤ Ø110mm PP	9.7 – 10.5mm	50 x 7.2mm (4 layers)	EI 120 U/U (E 120 U/U)
≤ Ø110mm PP	2.7 – 6.3mm	50 x 3.6mm (2 layers)	EI 240 U/C (E 240 U/C)
≤ Ø125mm PP	11.4mm	50 x 7.2mm (4 layers)	EI 240 U/U (E 240 U/U)
≤ Ø125mm PP	3.4 – 11.4mm	50 x 7.2mm (4 layers)	EI 240 U/C (E 240 U/C)
≤ Ø160mm PP	4.9 – 14.6mm	50 x 10.8mm (6 layers)	EI 240 U/C (E 240 U/C)
≤ Ø200mm PP	4.9 – 18.2mm	75 x 10.8mm (6 layers)	EI 240 C/C (E 240 C/C)
≤ Ø315mm PP	7.7 – 28.6mm	75 x 18.0mm (10 layers)	EI 60 C/C (E 60 C/C)
≤ Ø400mm PP	22.7mm	75 x 28.8mm (16 layers)	EI 60 C/C (E 60 C/C)

Protecta Pipe Wrap
cast or friction fittedPlastic
pipeA gap around the
wrap of ≤ 10mm
is allowed, filled
with Protecta FR
Acrylic to the full
depth of the wrapProtecta Pipe Wrap
to soffit side, tight
around pipe

24/0957-A.2.1-3

INSULATED PE PIPES FIRE RESISTANCE EI 240 C/C (E 240)

Protecta Pipe Wrap
cast or friction fitted

≥ 150MM RIGID FLOORS

A gap around the wrap of ≤ 10mm
is allowed, filled with Protecta FR
Acrylic to the full depth of the wrapPE, ABS or SAN+PVC pipe
with wall thickness 3.0-9.5mm,
≤ Ø68mm incl. insulation9-50mm continuous
elastomeric or phenolic
foam insulationProtecta Pipe Wrap
2 layers of 50mm wide
fitted at soffit, tight
around pipe insulation

24/0957-A.2.4-1

INSULATED PE PIPES FIRE RESISTANCE EI 240 C/C (E 240)

Protecta Pipe Wrap
cast or friction fitted

≥ 150MM RIGID FLOORS

A gap around the wrap of ≤ 10mm
is allowed, filled with Protecta FR
Acrylic to the full depth of the wrapPE, ABS or SAN+PVC pipe
with wall thickness 3.0-9.5mm,
≤ Ø178mm incl. insulation9-50mm continuous
elastomeric or phenolic
foam insulationProtecta Pipe Wrap
6 layers of 75mm wide
fitted at soffit, tight
around pipe insulation

24/0957-A.2.4-2

INSULATED PE PIPES FIRE RESISTANCE EI 120 C/C (E 120)

Protecta Pipe Wrap
cast or friction fitted

≥ 150MM RIGID FLOORS

A gap around the wrap of ≤ 10mm
is allowed, filled with Protecta FR
Acrylic to the full depth of the wrapPE, ABS or SAN+PVC pipe
≤ Ø160mm with wall thickness
3.0-9.5mm, and ≤ Ø260mm
incl. insulation9-50mm continuous
elastomeric or phenolic
foam insulationProtecta Pipe Wrap
10 layers of 75mm
wide fitted at soffit, tight
around pipe insulation

24/0957-A.2.4-3

INSULATED PP PIPES FIRE RESISTANCE EI 180 C/C (E 240)

Protecta Pipe Wrap
cast or friction fitted

≥ 150MM RIGID FLOORS

A gap around the wrap of ≤ 10mm
is allowed, filled with Protecta FR
Acrylic to the full depth of the wrapPP pipe with wall thickness
1.8-9.1mm, ≤ Ø68mm incl.
insulation9-50mm continuous
elastomeric or phenolic
foam insulationProtecta Pipe Wrap
2 layers of 50mm wide
fitted at soffit, tight
around pipe insulation

24/0957-A.2.4-4

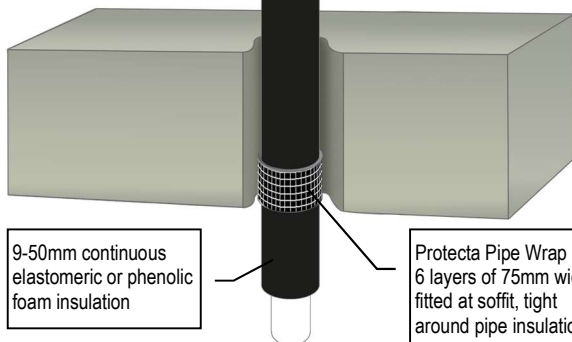
INSULATED PP PIPES FIRE RESISTANCE EI 240 C/C (E 240)

Protecta Pipe Wrap
cast or friction fitted

≥ 150MM RIGID FLOORS

A gap around the wrap of ≤ 10mm
is allowed, filled with Protecta FR
Acrylic to the full depth of the wrap

PP pipe with wall thickness
1.8-9.1mm, ≤ Ø178mm incl.
insulation



Protecta Pipe Wrap
6 layers of 75mm wide
fitted at soffit, tight
around pipe insulation

24/0957-A.2.4-5

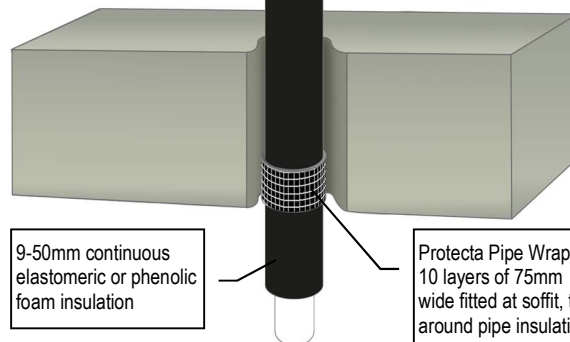
INSULATED PP PIPES FIRE RESISTANCE EI 120 C/C (E 120)

Protecta Pipe Wrap
cast or friction fitted

≥ 150MM RIGID FLOORS

A gap around the wrap of ≤ 10mm
is allowed, filled with Protecta FR
Acrylic to the full depth of the wrap

PP pipe ≤ Ø160mm with wall
thickness 1.8-9.1mm, and
≤ Ø260mm incl. insulation



9-50mm continuous
elastomeric or phenolic
foam insulation

Protecta Pipe Wrap
10 layers of 75mm
wide fitted at soffit, tight
around pipe insulation

24/0957-A.2.4-6

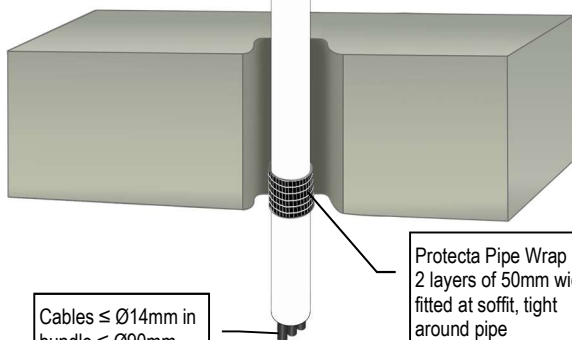
PLASTIC CONDUITS FIRE RESISTANCE EI 120 U/C (E 120)

Protecta Pipe Wrap
cast or friction fitted

≥ 150MM RIGID FLOORS

A gap around the wrap of ≤ 10mm
is allowed, filled with Protecta FR
Acrylic to the full depth of the wrap

PVC-U & PVC-C pipe
≤ Ø110mm with wall
thickness 2.4-6.6mm



Protecta Pipe Wrap
2 layers of 50mm wide
fitted at soffit, tight
around pipe

Cables ≤ Ø14mm in
bundle ≤ Ø90mm

24/0957-A.2.1-5

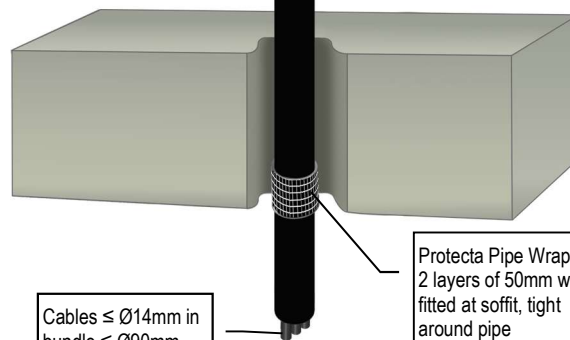
PLASTIC CONDUITS FIRE RESISTANCE EI 60 U/C (E 120)

Protecta Pipe Wrap
cast or friction fitted

≥ 150MM RIGID FLOORS

A gap around the wrap of ≤ 10mm
is allowed, filled with Protecta FR
Acrylic to the full depth of the wrap

PE, ABS & SAN+PVC pipe
≤ Ø110mm with wall
thickness 2.7-10.0mm



Cables ≤ Ø14mm in
bundle ≤ Ø90mm

Protecta Pipe Wrap
2 layers of 50mm wide
fitted at soffit, tight
around pipe

24/0957-A.2.1-6

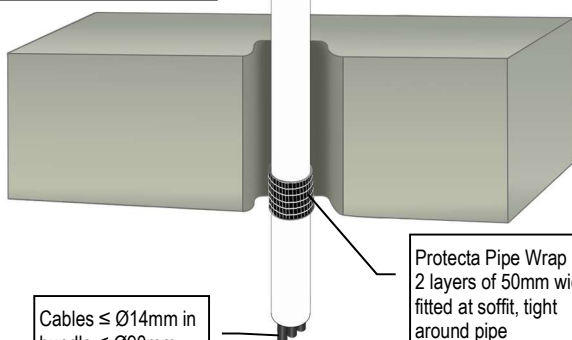
PLASTIC CONDUITS FIRE RESISTANCE EI 60 U/C (E 60)

Protecta Pipe Wrap
cast or friction fitted

≥ 150MM RIGID FLOORS

A gap around the wrap of ≤ 10mm
is allowed, filled with Protecta FR
Acrylic to the full depth of the wrap

PP pipe ≤ Ø110mm
with wall thickness
3.4-6.3mm



Protecta Pipe Wrap
2 layers of 50mm wide
fitted at soffit, tight
around pipe

Cables ≤ Ø14mm in
bundle ≤ Ø90mm

24/0957-A.2.1-7

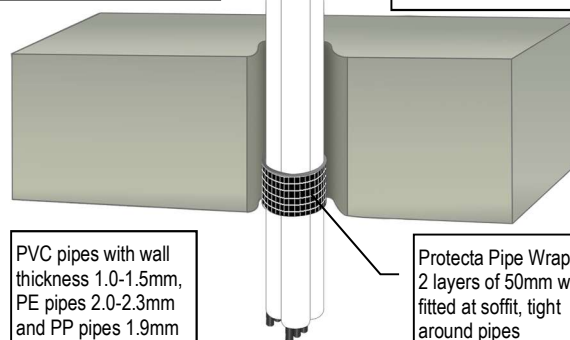
PLASTIC PIPES & CONDUITS FIRE RESISTANCE EI 60 U/U (E 90)

Protecta Pipe Wrap
cast or friction fitted

≥ 150MM RIGID FLOORS

A gap around the wrap of ≤ 10mm
is allowed, filled with Protecta FR
Acrylic to the full depth of the wrap

PE pipes ≤ Ø32mm and PVC
& PP pipes ≤ Ø20mm, single
or in a bundle ≤ Ø110mm, with
or without cables ≤ Ø14mm,
singles or in bundles



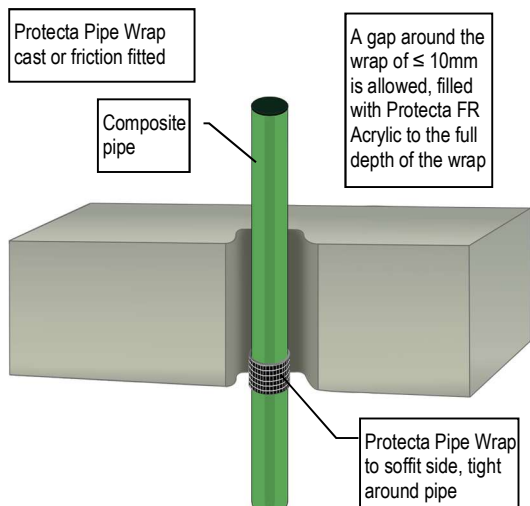
PVC pipes with wall
thickness 1.0-1.5mm,
PE pipes 2.0-2.3mm
and PP pipes 1.9mm

Protecta Pipe Wrap
2 layers of 50mm wide
fitted at soffit, tight
around pipes

24/0957-A.2.1-4

COMPOSITE AQUATHERM GREEN SDR9 PLASTIC PIPES FIRE RESISTANCE EI 240

≥ 150MM RIGID FLOORS

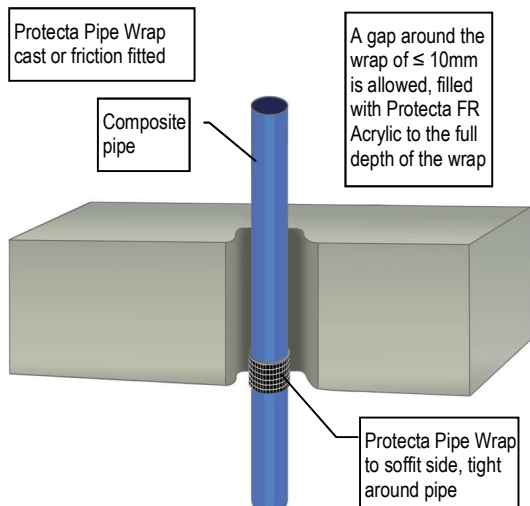


Services	FR Pipe Wrap	Classification
Ø 32mm Aquatherm Green SDR9 pipes	50 x 1.8mm (1 layer)	EI 240 C/C (E 240 C/C)
Ø 40mm Aquatherm Green SDR9 pipes	50 x 3.6mm (2 layers)	EI 240 C/C (E 240 C/C)
Ø 50mm Aquatherm Green SDR9 pipes	50 x 3.6mm (2 layers)	EI 240 C/C (E 240 C/C)
Ø 63mm Aquatherm Green SDR9 pipes	50 x 3.6mm (2 layers)	EI 240 C/C (E 240 C/C)
Ø 75mm Aquatherm Green SDR9 pipes	50 x 3.6mm (2 layers)	EI 240 C/C (E 240 C/C)
Ø 90mm Aquatherm Green SDR9 pipes	50 x 3.6mm (2 layers)	EI 240 C/C (E 240 C/C)
Ø 110mm Aquatherm Green SDR9 pipes	50 x 3.6mm (2 layers)	EI 240 C/C (E 240 C/C)

24/0957-A.2.2-5

COMPOSITE BLUEPOWER PLASTIC PIPES FIRE RESISTANCE EI 120 – 240

≥ 150MM RIGID FLOORS

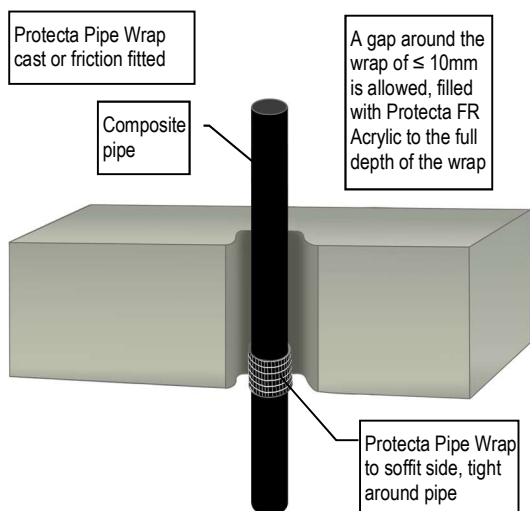


Services	FR Pipe Wrap	Classification
Ø 32mm BluePower pipes	50 x 3.6mm (2 layers)	EI 240 U/U (E 240 U/U)
Ø 40mm BluePower pipes	50 x 3.6mm (2 layers)	EI 240 U/U (E 240 U/U)
Ø 50mm BluePower pipes	50 x 3.6mm (2 layers)	EI 240 U/U (E 240 U/U)
Ø 75mm BluePower pipes	50 x 3.6mm (2 layers)	EI 120 U/C (E 120 U/C)
Ø 90mm BluePower pipes	50 x 3.6mm (2 layers)	EI 120 U/C (E 120 U/C)
Ø 110mm BluePower pipes	50 x 3.6mm (2 layers)	EI 120 U/C (E 120 U/C)
Ø 125mm BluePower pipes	50 x 7.2mm (4 layers)	EI 120 U/C (E 120 U/C)
Ø 160mm BluePower pipes	50 x 10.8mm (6 layers)	EI 240 U/C (E 240 U/C)

24/0957-A.2.2-8

COMPOSITE GEBERIT SILENT-PP PLASTIC PIPES FIRE RESISTANCE EI 120-240

≥ 150MM RIGID FLOORS

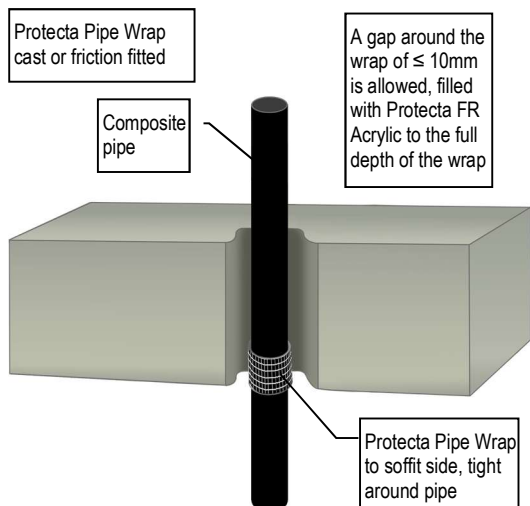


Services	FR Pipe Wrap	Classification
Ø 32mm Geberit Silent-PP pipes	50 x 3.6mm (2 layers)	EI 120 U/U (E 120 U/U)
Ø 40mm Geberit Silent-PP pipes	50 x 3.6mm (2 layers)	EI 120 U/U (E 120 U/U)
Ø 50mm Geberit Silent-PP pipes	50 x 3.6mm (2 layers)	EI 120 U/U (E 120 U/U)
Ø 75mm Geberit Silent-PP pipes	50 x 3.6mm (2 layers)	EI 120 U/C (E 120 U/C)
Ø 90mm Geberit Silent-PP pipes	50 x 3.6mm (2 layers)	EI 120 U/C (E 120 U/C)
Ø 110mm Geberit Silent-PP pipes	50 x 3.6mm (2 layers)	EI 120 U/C (E 120 U/C)
Ø 125mm Geberit Silent-PP pipes	50 x 10.8mm (6 layers)	EI 120 U/C (E 120 U/C)
Ø 160mm Geberit Silent-PP pipes	50 x 10.8mm (6 layers)	EI 240 U/C (E 240 U/C)

24/0957-A.2.2-7

COMPOSITE HULIOT ULTRA SILENT PLASTIC PIPES FIRE RESISTANCE EI 60-240

≥ 150MM RIGID FLOORS

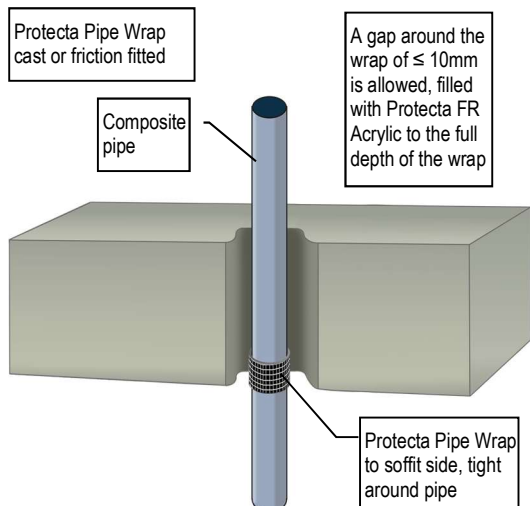


Services	FR Pipe Wrap	Classification
Ø 32mm Huliote Ultra Silent pipes	50 x 3.6mm (2 layers)	EI 60 U/U (E 240 U/U)
Ø 40mm Huliote Ultra Silent pipes	50 x 3.6mm (2 layers)	EI 60 U/U (E 240 U/U)
Ø 50mm Huliote Ultra Silent pipes	50 x 3.6mm (2 layers)	EI 60 U/U (E 240 U/U)
Ø 75mm Huliote Ultra Silent pipes	50 x 3.6mm (2 layers)	EI 180 U/C (E 240 U/C)
Ø 90mm Huliote Ultra Silent pipes	50 x 3.6mm (2 layers)	EI 180 U/C (E 240 U/C)
Ø 110mm Huliote Ultra Silent pipes	50 x 3.6mm (2 layers)	EI 180 U/C (E 240 U/C)
Ø 125mm Huliote Ultra Silent pipes	50 x 10.8mm (6 layers)	EI 180 U/C (E 240 U/C)
Ø 160mm Huliote Ultra Silent pipes	50 x 10.8mm (6 layers)	EI 180 U/C (E 240 U/C)
Ø 200mm Huliote Ultra Silent pipes	75 x 10.8mm (6 layers)	EI 240 C/C (E 240 C/C)

24/0957-A.2.2-11

COMPOSITE POLO-KAL NG PLASTIC PIPES FIRE RESISTANCE EI 180 – 240

≥ 150MM RIGID FLOORS

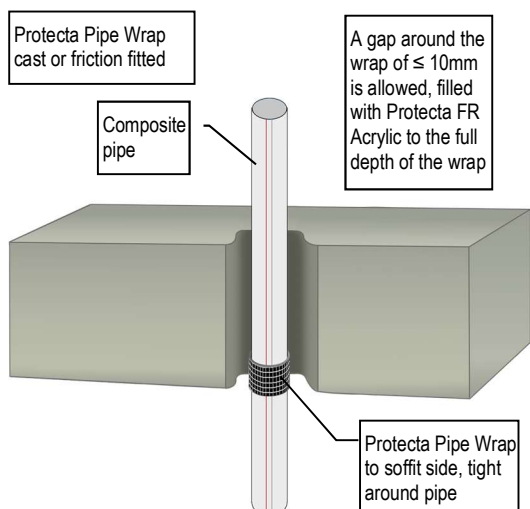


Services	FR Pipe Wrap	Classification
Ø 32mm Polo-Kal NG pipes	50 x 3.6mm (2 layers)	EI 180 U/C (E 240 U/C)
Ø 40mm Polo-Kal NG pipes	50 x 3.6mm (2 layers)	EI 180 U/C (E 240 U/C)
Ø 50mm Polo-Kal NG pipes	50 x 3.6mm (2 layers)	EI 180 U/C (E 240 U/C)
Ø 75mm Polo-Kal NG pipes	50 x 3.6mm (2 layers)	EI 180 U/C (E 180 U/C)
Ø 90mm Polo-Kal NG pipes	50 x 3.6mm (2 layers)	EI 180 U/C (E 180 U/C)
Ø 110mm Polo-Kal NG pipes	50 x 3.6mm (2 layers)	EI 180 U/C (E 180 U/C)
Ø 125mm Polo-Kal NG pipes	50 x 7.2mm (4 layers)	EI 240 U/C (E 240 U/C)
Ø 160mm Polo-Kal NG pipes	50 x 10.8mm (6 layers)	EI 240 U/C (E 240 U/C)

24/0957-A.2.2-4

COMPOSITE REHAU RAUPIANO PLUS PLASTIC PIPES FIRE RESISTANCE EI 120

≥ 150MM RIGID FLOORS

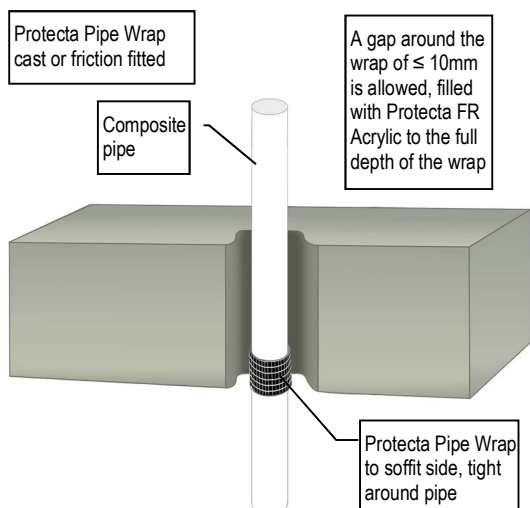


Services	FR Pipe Wrap	Classification
Ø 40mm Rehau Raupiano Plus pipes	50 x 3.6mm (2 layers)	EI 120 U/U (E 120 U/U)
Ø 50mm Rehau Raupiano Plus pipes	50 x 3.6mm (2 layers)	EI 120 U/U (E 120 U/U)
Ø 75mm Rehau Raupiano Plus pipes	50 x 3.6mm (2 layers)	EI 120 U/C (E 120 U/C)
Ø 90mm Rehau Raupiano Plus pipes	50 x 3.6mm (2 layers)	EI 120 U/C (E 120 U/C)
Ø 110mm Rehau Raupiano Plus pipes	50 x 3.6mm (2 layers)	EI 120 U/C (E 120 U/C)
Ø 125mm Rehau Raupiano Plus pipes	50 x 7.2mm (4 layers)	EI 120 U/C (E 240 U/C)
Ø 160mm Rehau Raupiano Plus pipes	50 x 10.8mm (6 layers)	EI 120 U/C (E 120 U/C)

24/0957-A.2.2-3

COMPOSITE UPONOR DECIBEL PLASTIC PIPES FIRE RESISTANCE EI 120

≥ 150MM RIGID FLOORS

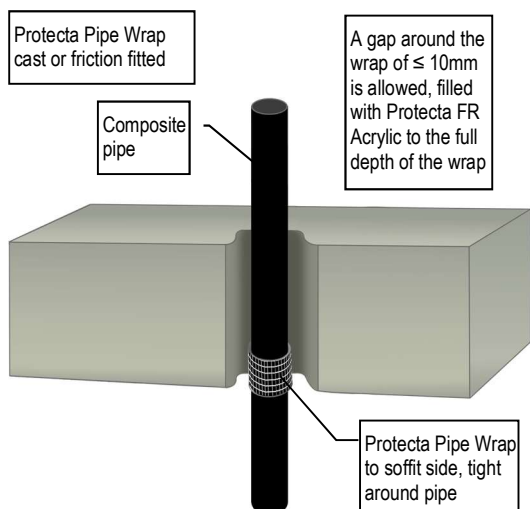


Services	FR Pipe Wrap	Classification
Ø 50mm Uponor Decibel pipes	50 x 3.6mm (2 layers)	EI 120 U/U (E 120 U/U)
Ø 75mm Uponor Decibel pipes	50 x 3.6mm (2 layers)	EI 120 U/C (E 120 U/C)
Ø 110mm Uponor Decibel pipes	50 x 3.6mm (2 layers)	EI 120 U/C (E 120 U/C)

24/0957-A.2.2-9

COMPOSITE VALSIR BLACKFIRE PLASTIC PIPES FIRE RESISTANCE EI 120-240

≥ 150MM RIGID FLOORS

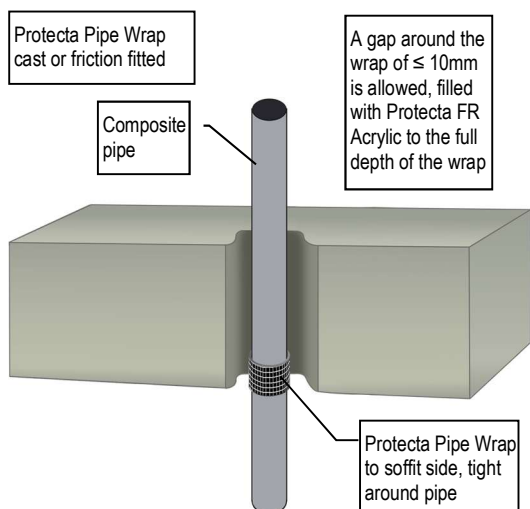


Services	FR Pipe Wrap	Classification
Ø 32mm Valsir Blackfire pipes	50 x 3.6mm (2 layers)	EI 120 U/C (E 240 U/U)
Ø 40mm Valsir Blackfire pipes	50 x 3.6mm (2 layers)	EI 120 U/C (E 240 U/U)
Ø 50mm Valsir Blackfire pipes	50 x 3.6mm (2 layers)	EI 120 U/C (E 240 U/U)
Ø 75mm Valsir Blackfire pipes	50 x 3.6mm (2 layers)	EI 120 U/C (E 120 U/C)
Ø 90mm Valsir Blackfire pipes	50 x 3.6mm (2 layers)	EI 120 U/C (E 120 U/C)
Ø 110mm Valsir Blackfire pipes	50 x 3.6mm (2 layers)	EI 240 U/C (E 240 U/C)
Ø 125mm Valsir Blackfire pipes	50 x 10.8mm (6 layers)	EI 240 U/C (E 240 U/C)
Ø 160mm Valsir Blackfire pipes	50 x 10.8mm (6 layers)	EI 240 U/C (E 240 U/C)

24/0957-A.2.2-13

COMPOSITE VALSIR PP3 PLASTIC PIPES FIRE RESISTANCE EI 120 – 240

≥ 150MM RIGID FLOORS

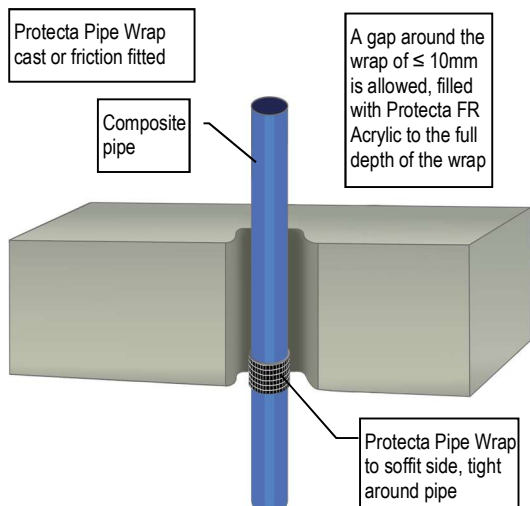


Services	FR Pipe Wrap	Classification
Ø 32mm Valsir PP3 pipes	50 x 3.6mm (2 layers)	EI 120 U/C (E 240 U/U)
Ø 40mm Valsir PP3 pipes	50 x 3.6mm (2 layers)	EI 120 U/C (E 240 U/U)
Ø 50mm Valsir PP3 pipes	50 x 3.6mm (2 layers)	EI 120 U/C (E 240 U/U)
Ø 75mm Valsir PP3 pipes	50 x 3.6mm (2 layers)	EI 120 U/C (E 120 U/C)
Ø 90mm Valsir PP3 pipes	50 x 3.6mm (2 layers)	EI 120 U/C (E 120 U/C)
Ø 110mm Valsir PP3 pipes	50 x 3.6mm (2 layers)	EI 240 U/C (E 240 U/C)
Ø 125mm Valsir PP3 pipes	50 x 10.8mm (6 layers)	EI 240 U/C (E 240 U/C)
Ø 160mm Valsir PP3 pipes	50 x 10.8mm (6 layers)	EI 240 U/C (E 240 U/C)

24/0957-A.2.2-12

COMPOSITE VALSIR TRIPLUS PLASTIC PIPES FIRE RESISTANCE EI 120-240

≥ 150MM RIGID FLOORS

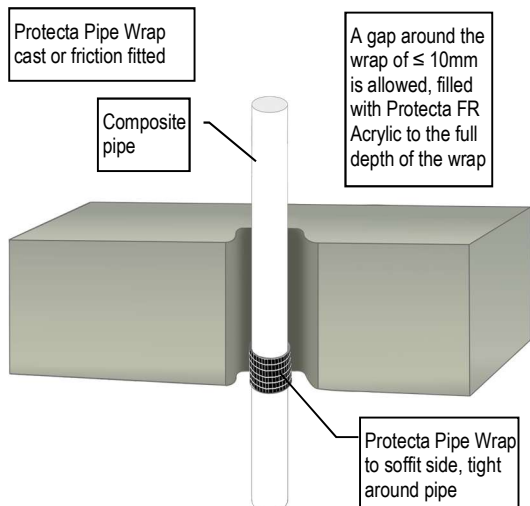


Services	FR Pipe Wrap	Classification
Ø 32mm Valsir Triplus pipes	50 x 3.6mm (2 layers)	EI 120 U/C (E 240 U/U)
Ø 40mm Valsir Triplus pipes	50 x 3.6mm (2 layers)	EI 120 U/C (E 240 U/U)
Ø 50mm Valsir Triplus pipes	50 x 3.6mm (2 layers)	EI 120 U/C (E 240 U/U)
Ø 75mm Valsir Triplus pipes	50 x 3.6mm (2 layers)	EI 120 U/C (E 120 U/C)
Ø 90mm Valsir Triplus pipes	50 x 3.6mm (2 layers)	EI 120 U/C (E 120 U/C)
Ø 110mm Valsir Triplus pipes	50 x 3.6mm (2 layers)	EI 240 U/C (E 240 U/C)
Ø 125mm Valsir Triplus pipes	50 x 10.8mm (6 layers)	EI 240 U/C (E 240 U/C)
Ø 160mm Valsir Triplus pipes	50 x 10.8mm (6 layers)	EI 240 U/C (E 240 U/C)

24/0957-A.2.2-14

COMPOSITE WAVIN AS+ PLASTIC PIPES FIRE RESISTANCE EI 60-240

≥ 150MM RIGID FLOORS

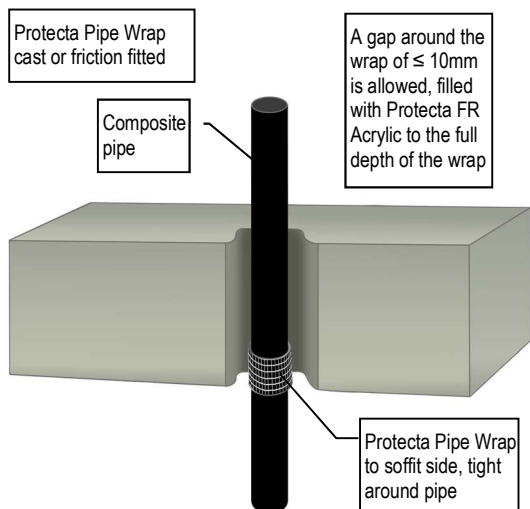


Services	FR Pipe Wrap	Classification
Ø 50mm Wavin AS+ pipes	50 x 3.6mm (2 layers)	EI 60 U/U (E 120 U/U)
Ø 50mm Wavin AS+ pipes	50 x 3.6mm (2 layers)	EI 240 U/C (E 240 U/C)
Ø 75mm Wavin AS+ pipes	50 x 3.6mm (2 layers)	EI 60 U/C (E 120 U/C)
Ø 75mm Wavin AS+ pipes	50 x 3.6mm (2 layers)	EI 240 C/C (E 240 C/C)
Ø 90mm Wavin AS+ pipes	50 x 3.6mm (2 layers)	EI 60 U/C (E 120 U/C)
Ø 90mm Wavin AS+ pipes	50 x 3.6mm (2 layers)	EI 240 C/C (E 240 C/C)
Ø 110mm Wavin AS+ pipes	50 x 3.6mm (2 layers)	EI 60 U/C (E 120 U/C)
Ø 110mm Wavin AS+ pipes	50 x 3.6mm (2 layers)	EI 240 C/C (E 240 C/C)
Ø 125mm Wavin AS+ pipes	75 x 10.8mm (6 layers)	EI 240 C/C (E 240 C/C)
Ø 160mm Wavin AS+ pipes	75 x 10.8mm (6 layers)	EI 240 C/C (E 240 C/C)
Ø 200mm Wavin AS+ pipes	75 x 10.8mm (6 layers)	EI 240 C/C (E 240 C/C)

24/0957-A.2.2-10

COMPOSITE WAVIN SITECH PLASTIC PIPES FIRE RESISTANCE EI 120

≥ 150MM RIGID FLOORS



Services	FR Pipe Wrap	Classification
Ø 32mm Wavin SiTech pipes	50 x 3.6mm (2 layers)	EI 120 U/U (E 120 U/U)
Ø 40mm Wavin SiTech pipes	50 x 3.6mm (2 layers)	EI 120 U/U (E 120 U/U)
Ø 50mm Wavin SiTech pipes	50 x 3.6mm (2 layers)	EI 120 U/U (E 120 U/U)
Ø 75mm Wavin SiTech pipes	50 x 3.6mm (2 layers)	EI 120 U/C (E 120 U/C)
Ø 90mm Wavin SiTech pipes	50 x 3.6mm (2 layers)	EI 120 U/C (E 120 U/C)
Ø 110mm Wavin SiTech pipes	50 x 3.6mm (2 layers)	EI 120 U/C (E 120 U/C)

24/0957-A.2.2-6

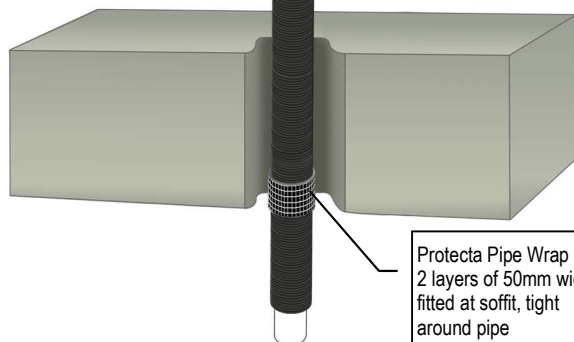
PEX PIPE-IN-PIPE SYSTEM FIRE RESISTANCE EI 120 C/C (E 120)

Protecta Pipe Wrap
cast or friction fitted

≥ 150MM RIGID FLOORS

A gap around the wrap of ≤ 10mm
is allowed, filled with Protecta FR
Acrylic to the full depth of the wrap

PEX pipe
≤ Ø54mm



Protecta Pipe Wrap
2 layers of 50mm wide
fitted at soffit, tight
around pipe

24/0957-A.2.2-1

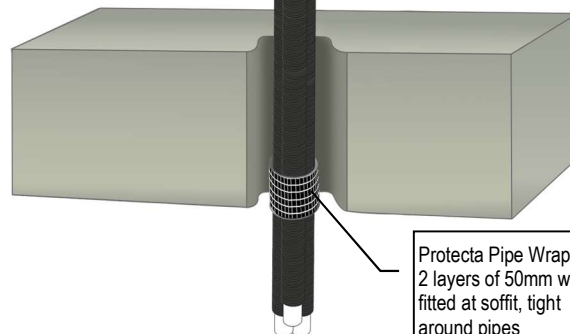
PEX PIPE-IN-PIPE SYSTEM FIRE RESISTANCE EI 240 C/C (E 240)

Protecta Pipe Wrap
cast or friction fitted

≥ 150MM RIGID FLOORS

A gap around the wrap of ≤ 10mm
is allowed, filled with Protecta FR
Acrylic to the full depth of the wrap

PEX pipes ≤ Ø25mm
single or in a bundle
≤ Ø50mm



Protecta Pipe Wrap
2 layers of 50mm wide
fitted at soffit, tight
around pipes

24/0957-A.2.2-2

INSULATED STEEL PIPES FIRE RESISTANCE EI 120 C/U (E 120)

Protecta Pipe Wraps
cast or friction fitted

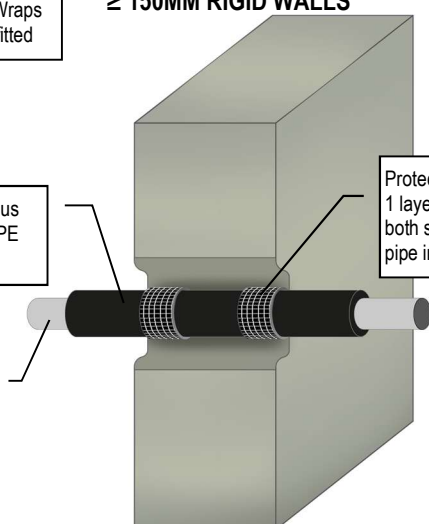
≥ 150MM RIGID WALLS

A gap around the
wrap of ≤ 10mm
is allowed, filled
with Protecta FR
Acrylic to the full
depth of the wrap

13mm continuous
elastomeric or PE
foam insulation

Protecta Pipe Wraps
1 layer of 50mm wide
both sides, tight around
pipe insulation

Steel pipe
≤ Ø40mm



24/0957-A.1.4-3

INSULATED STEEL PIPES FIRE RESISTANCE EI 60 U/U (E 120)

Protecta Pipe Wraps
cast or friction fitted

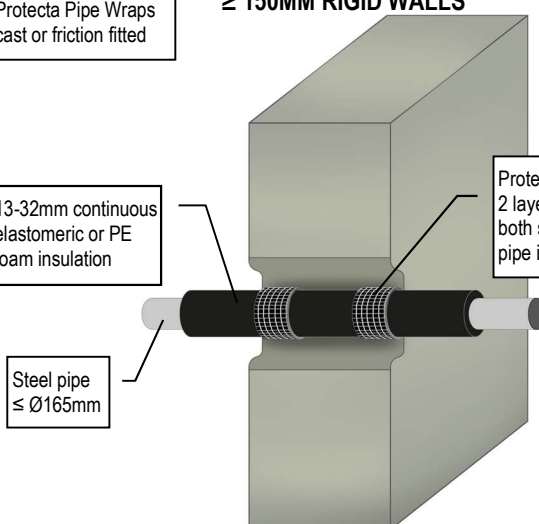
≥ 150MM RIGID WALLS

A gap around the
wrap of ≤ 10mm
is allowed, filled
with Protecta FR
Acrylic to the full
depth of the wrap

13-32mm continuous
elastomeric or PE
foam insulation

Protecta Pipe Wraps
2 layers of 50mm wide
both sides, tight around
pipe insulation

Steel pipe
≤ Ø165mm



24/0957-A.1.4-4

INSULATED STEEL PIPES FIRE RESISTANCE EI 90 C/U (E 90)

Protecta Pipe Wraps
cast or friction fitted

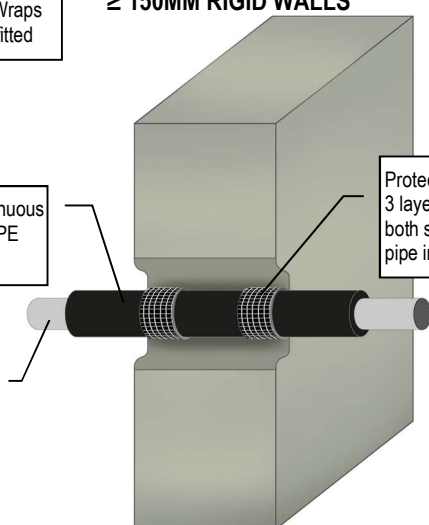
≥ 150MM RIGID WALLS

A gap around the
wrap of ≤ 10mm
is allowed, filled
with Protecta FR
Acrylic to the full
depth of the wrap

32-50mm continuous
elastomeric or PE
foam insulation

Protecta Pipe Wraps
3 layers of 50mm wide
both sides, tight around
pipe insulation

Steel pipe
≤ Ø324mm



24/0957-A.1.4-5

INSULATED STEEL PIPES FIRE RESISTANCE EI 90 C/U (E 90)

Protecta Pipe Wraps
cast or friction fitted

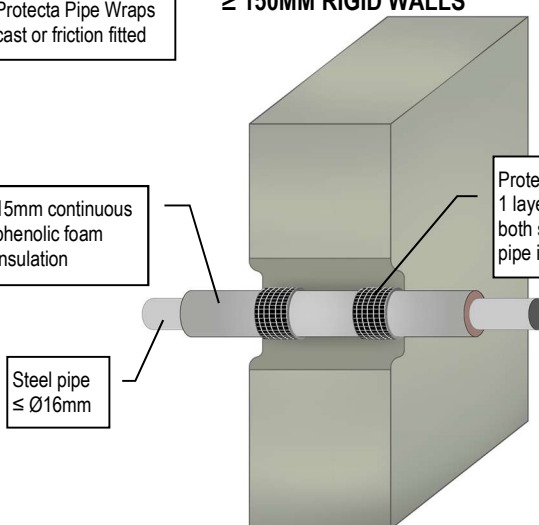
≥ 150MM RIGID WALLS

A gap around the
wrap of ≤ 10mm
is allowed, filled
with Protecta FR
Acrylic to the full
depth of the wrap

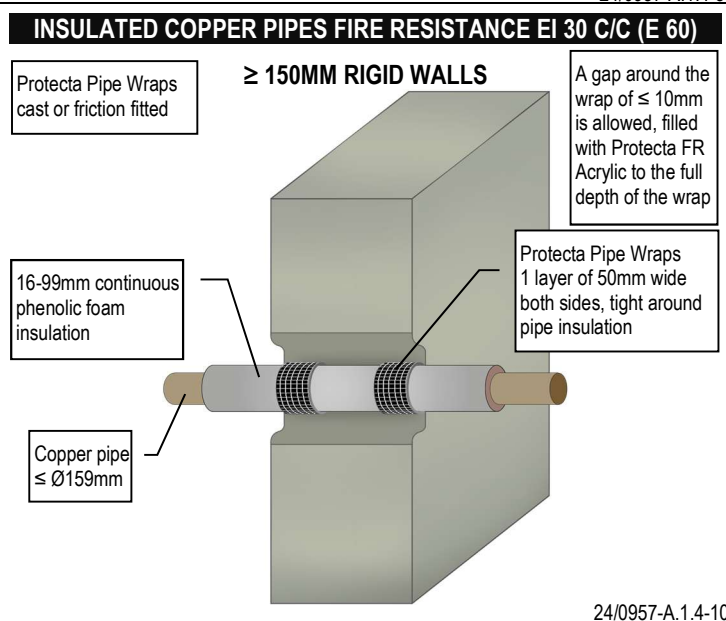
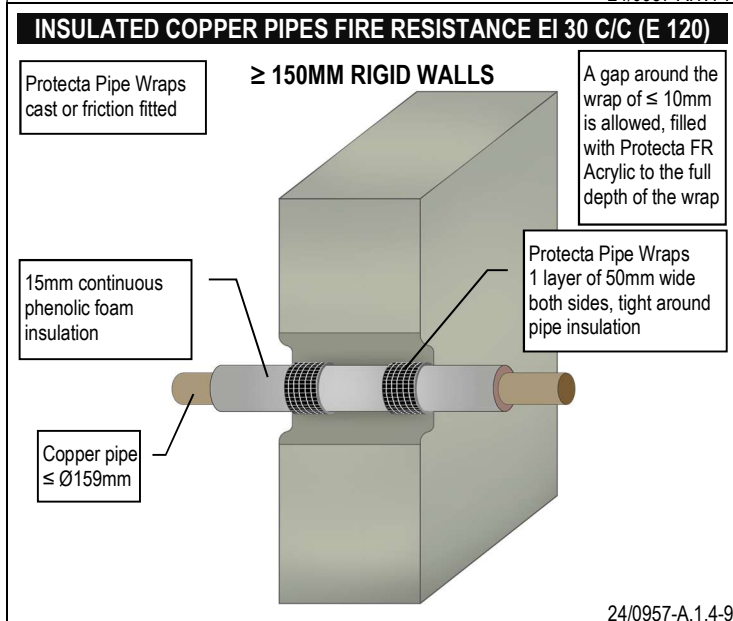
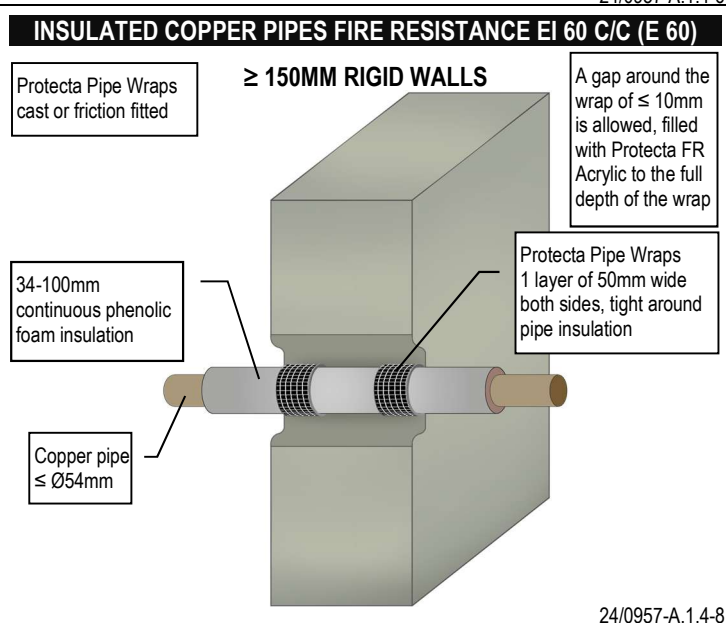
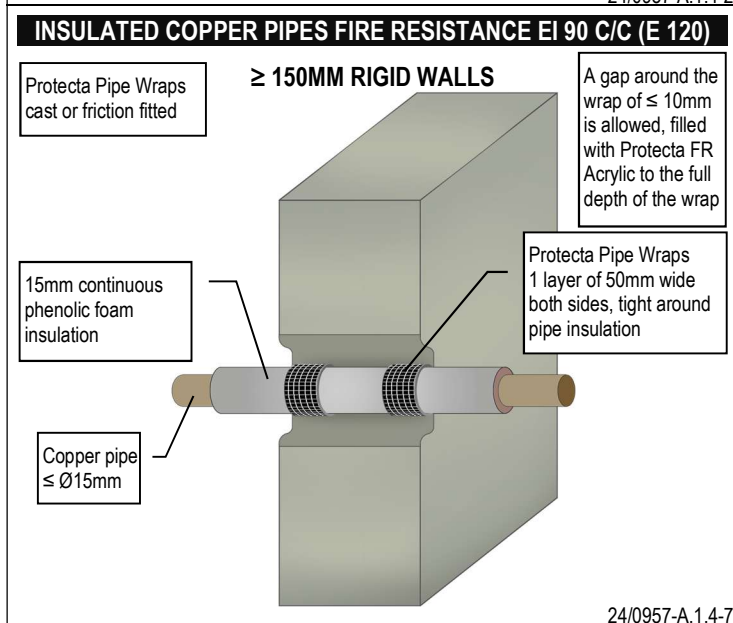
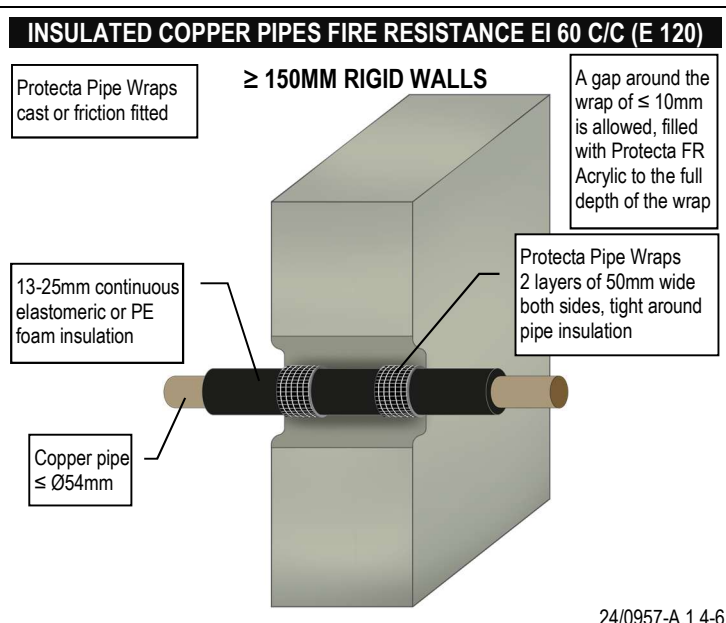
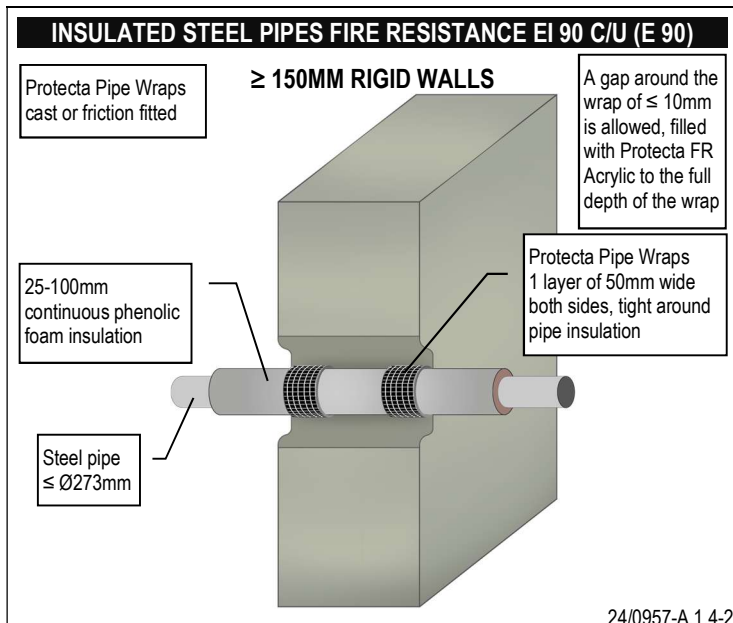
15mm continuous
phenolic foam
insulation

Protecta Pipe Wraps
1 layer of 50mm wide
both sides, tight around
pipe insulation

Steel pipe
≤ Ø16mm



24/0957-A.1.4-1



INSULATED COPPER PIPES FIRE RESISTANCE EI 60 C/C (E 60)

Protecta Pipe Wraps
cast or friction fitted

≥ 150MM RIGID WALLS

A gap around the
wrap of ≤ 10mm
is allowed, filled
with Protecta FR
Acrylic to the full
depth of the wrap

100mm continuous
phenolic foam
insulation

Protecta Pipe Wraps
1 layer of 50mm wide
both sides, tight around
pipe insulation

Copper pipe
≤ Ø159mm

24/0957-A.1.4-11

COPPER OR STEEL PIPES FIRE RESISTANCE EI 60 C/C (E 120)

Protecta Pipe Wraps
cast or friction fitted

≥ 150MM RIGID WALLS

A gap around the
wrap of ≤ 10mm
is allowed, filled
with Protecta FR
Acrylic to the full
depth of the wrap

40mm continuous PU
foam insulation

Protecta Pipe Wraps
2 layers of 50mm wide
both sides, tight around
pipe insulation

Copper or steel pipe
≤ Ø54mm

24/0957-A.1.4-12

INSULATED ALUPEX PIPES FIRE RESISTANCE EI 120 C/C (E 120)

Protecta Pipe Wraps
cast or friction fitted

≥ 150MM RIGID WALLS

A gap around the
wrap of ≤ 10mm
is allowed, filled
with Protecta FR
Acrylic to the full
depth of the wrap

9-25mm continuous
elastomeric or PE
foam insulation

Protecta Pipe Wraps
2 layers of 50mm wide
both sides, tight around
pipe insulation

Alupex pipe
≤ Ø75mm

24/0957-A.1.4-13

PLASTIC PIPE BUNDLES FIRE RESISTANCE EI 240 U/C (E 240)

Protecta Pipe Wraps
cast or friction fitted

≥ 150MM RIGID WALLS

A gap around the
wrap of ≤ 10mm
is allowed, filled
with Protecta FR
Acrylic to the full
depth of the wrap

PVC pipes with wall
thickness 1.0-2.4mm, PE
pipes 2.0-4.4mm and PP
pipes 1.8-4.4mm

Protecta Pipe Wraps
2 layers of 50mm wide
both sides, tight around
pipes

PVC, PE & PP pipes
≤ Ø32mm, single or in a
bundle ≤ Ø107mm

24/0957-A.1.1-4

PVC PIPES FIRE RESISTANCE EI 120-240
≥ 150MM RIGID WALLS

Protecta Pipe Wraps
cast or friction fitted

Plastic
pipe

A gap around the
wrap of ≤ 10mm
is allowed, filled
with Protecta FR
Acrylic to the full
depth of the wrap

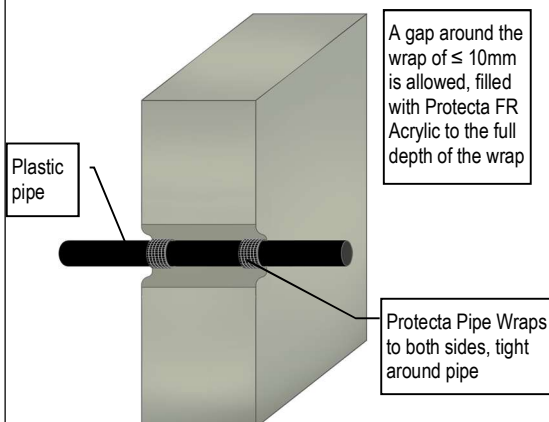
Protecta Pipe Wraps
to both sides, tight
around pipe

Services	Pipe Wall Thickness	FR Pipe Wrap	Classification
≤ Ø 40mm PVC-U & PVC-C	1.9 – 3.0mm	50 x 1.8mm (1 layer)	EI 120 U/U (E 120 U/U)
≤ Ø 40mm PVC-U & PVC-C	1.9 – 3.0mm	50 x 1.8mm (1 layer)	EI 240 U/C (E 240 U/C)
≤ Ø 40mm PVC-U & PVC-C	3.1 – 4.3mm	50 x 1.8mm (1 layer)	EI 60 U/C (E 120 U/C)
≤ Ø 50mm PVC-U & PVC-C	1.0 – 1.8mm	50 x 3.6mm (2 layers)	EI 120 U/C (E 120 U/C)
≤ Ø 110mm PVC-U & PVC-C	2.7 – 6.6mm	50 x 3.6mm (2 layers)	EI 240 U/C (E 240 U/C)
≤ Ø 125mm PVC-U & PVC-C	3.7 – 7.4mm	50 x 5.4mm (3 layers)	EI 120 U/C (E 120 U/C)
≤ Ø 125mm PVC-U & PVC-C	4.7 – 7.4mm	50 x 7.2mm (4 layers)	EI 240 U/C (E 240 U/C)
≤ Ø 160mm PVC-U & PVC-C	3.2 – 9.5mm	50 x 7.2mm (4 layers)	EI 60 U/C (E 60 U/C)
≤ Ø 160mm PVC-U & PVC-C	4.0 – 9.5mm	50 x 10.8mm (6 layers)	EI 240 U/C (E 240 U/C)
≤ Ø 200mm PVC-U & PVC-C	4.9 – 11.9mm	75 x 10.8mm (6 layers)	EI 180 C/C (E 180 C/C)
≤ Ø 315mm PVC-U & PVC-C	7.7 – 12.1mm	75 x 18.0mm (10 layers)	EI 120 C/C (E 120 C/C)
≤ Ø 400mm PVC-U & PVC-C	9.8 – 15.3mm	75 x 28.8mm (16 layers)	EI 120 C/C (E 120 C/C)

24/0957-A.1.1-1

PE PIPES FIRE RESISTANCE EI 120-240

≥ 150MM RIGID WALLS

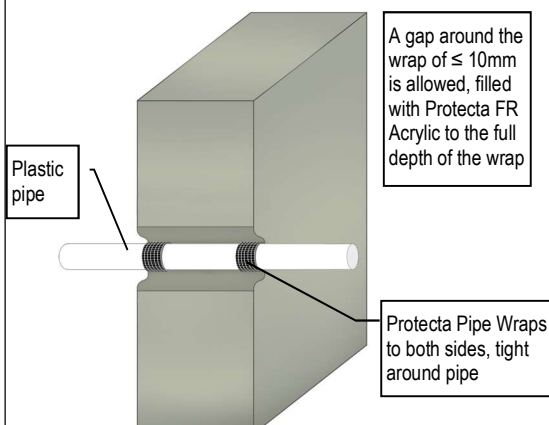
Protecta Pipe Wraps
cast or friction fitted

Services	Pipe Wall Thickness	FR Pipe Wrap	Classification
≤ Ø 40mm PE, ABS & SAN+PVC	2.4 – 3.7mm	50 x 1.8mm (1 layer)	EI 120 U/U (E 120 U/U)
≤ Ø 40mm PE, ABS & SAN+PVC	2.4 – 4.6mm	50 x 1.8mm (1 layer)	EI 240 U/C (E 240 U/C)
≤ Ø 110mm PE, ABS & SAN+PVC	3.4 – 10.0mm	50 x 3.6mm (2 layers)	EI 240 U/C (E 240 U/C)
≤ Ø 125mm PE, ABS & SAN+PVC	4.8 – 12.0mm	50 x 5.4mm (3 layers)	EI 90 U/C (E 120 U/C)
≤ Ø 125mm PE, ABS & SAN+PVC	3.9 – 7.4mm	50 x 7.2mm (4 layers)	EI 240 U/C (E 240 U/C)
≤ Ø 160mm PE, ABS & SAN+PVC	4.9 – 9.5mm	50 x 10.8mm (6 layers)	EI 240 U/C (E 240 U/C)
≤ Ø 160mm PE, ABS & SAN+PVC	9.6 – 14.6mm	50 x 10.8mm (6 layers)	EI 60 U/C (E 90 U/C)
≤ Ø 160mm PE, ABS & SAN+PVC	9.6 – 14.6mm	50 x 10.8mm (6 layers)	EI 120 C/C (E 120 C/C)
≤ Ø 200mm PE, ABS & SAN+PVC	4.9 – 18.2mm	75 x 10.8mm (6 layers)	EI 180 C/C (E 180 C/C)
≤ Ø 315mm PE, ABS & SAN+PVC	18.7 – 28.5mm	75 x 18.0mm (10 layers)	EI 60 C/C (E 180 C/C)
≤ Ø 315mm PE, ABS & SAN+PVC	28.6mm	75 x 18.0mm (10 layers)	EI 120 C/C (E 180 C/C)
≤ Ø 400mm PE, ABS & SAN+PVC	9.8 – 23.6mm	75 x 28.8mm (16 layers)	EI 30 C/C (E 30 C/C)
≤ Ø 400mm PE, ABS & SAN+PVC	23.7 – 36.2mm	75 x 28.8mm (16 layers)	EI 60 C/C (E 60 C/C)
≤ Ø 400mm PE, ABS & SAN+PVC	36.3mm	75 x 28.8mm (16 layers)	EI 120 C/C (E 120 C/C)

24/0957-A.1.1-2

PP PIPES FIRE RESISTANCE EI 120-240

≥ 150MM RIGID WALLS

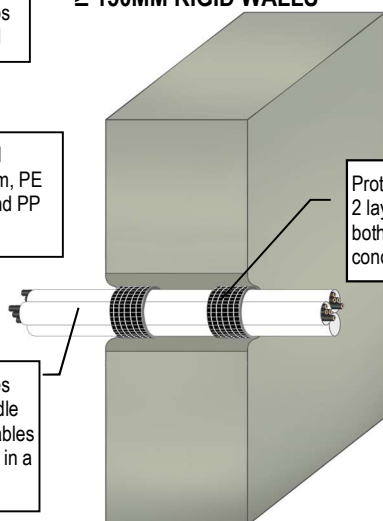
Protecta Pipe Wraps
cast or friction fitted

Services	Pipe Wall Thickness	FR Pipe Wrap	Classification
≤ Ø 40mm PP	1.8 – 5.5mm	50 x 1.8mm (1 layer)	EI 120 U/U (E 120 U/U)
≤ Ø 40mm PP	1.8 – 5.5mm	50 x 1.8mm (1 layer)	EI 240 U/C (E 240 U/C)
≤ Ø 110mm PP	2.7 – 15.1mm	50 x 3.6mm (2 layers)	EI 90 U/U (E 90 U/U)
≤ Ø 110mm PP	2.7 – 10.0mm	50 x 3.6mm (2 layers)	EI 240 C/C (E 240 C/C)
≤ Ø 125mm PP	3.1 – 17.1mm	50 x 5.4mm (3 layers)	EI 90 U/C (E 120 U/C)
≤ Ø 125mm PP	3.1 – 11.4mm	50 x 7.2mm (4 layers)	EI 240 C/C (E 240 C/C)
≤ Ø 160mm PP	4.9 – 21.9mm	50 x 10.8mm (6 layers)	EI 60 U/C (E 60 U/C)
≤ Ø 160mm PP	4.9 – 14.6mm	50 x 10.8mm (6 layers)	EI 240 C/C (E 240 C/C)
≤ Ø 200mm PP	4.9 – 18.2mm	75 x 10.8mm (6 layers)	EI 180 C/C (E 180 C/C)
≤ Ø 315mm PP	12.1 – 28.5mm	50 x 18.0mm (10 layers)	EI 30 C/C (E 30 C/C)
≤ Ø 315mm PP	28.6mm	50 x 18.0mm (10 layers)	EI 60 C/C (E 60 C/C)
≤ Ø 400mm PP	22.7mm	50 x 28.8mm (16 layers)	EI 45 C/C (E 45 C/C)

24/0957-A.1.1-3

PLASTIC CONDUIT BUNDLES FIRE RESISTANCE EI 90 U/C (E 90)

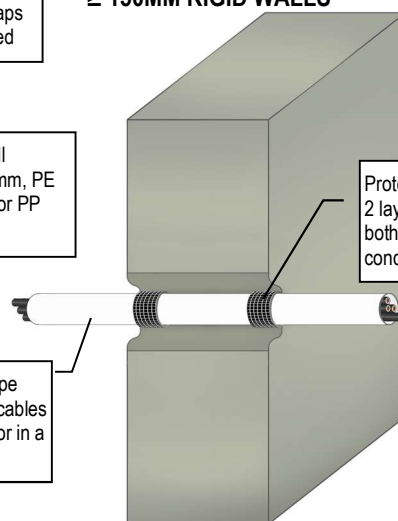
≥ 150MM RIGID WALLS

Protecta Pipe Wraps
cast or friction fittedPVC pipes with wall
thickness 1.0-2.4mm, PE
pipes 2.0-3.7mm and PP
pipes 1.8-2.0mmPVC, PE & PP pipes
≤ Ø32mm in a bundle
≤ Ø110mm, with cables
≤ Ø14mm single or in a
bundleA gap around the
wrap of ≤ 10mm
is allowed, filled
with Protecta FR
Acrylic to the full
depth of the wrapProtecta Pipe Wraps
2 layers of 50mm wide
both sides, tight around
conduits

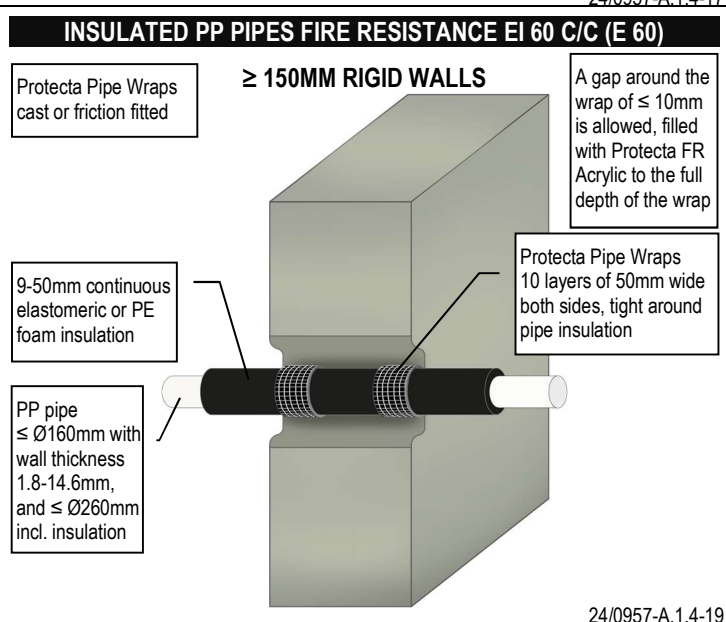
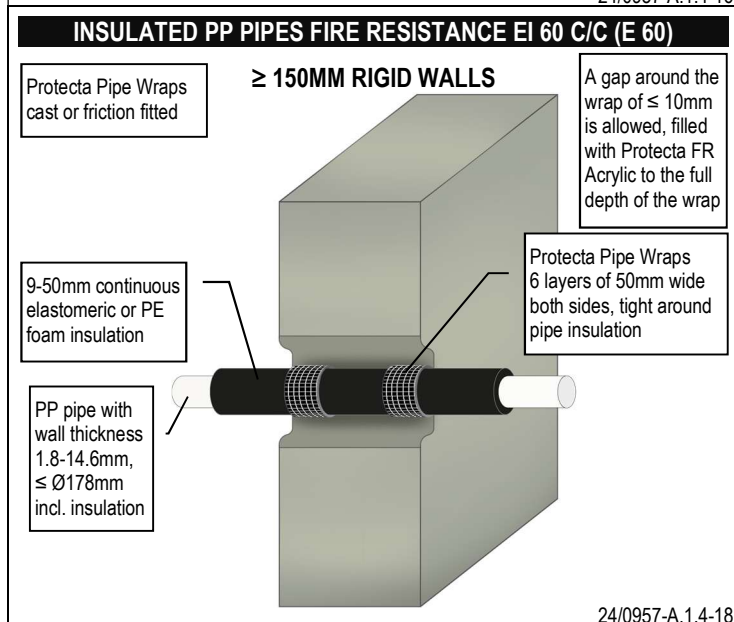
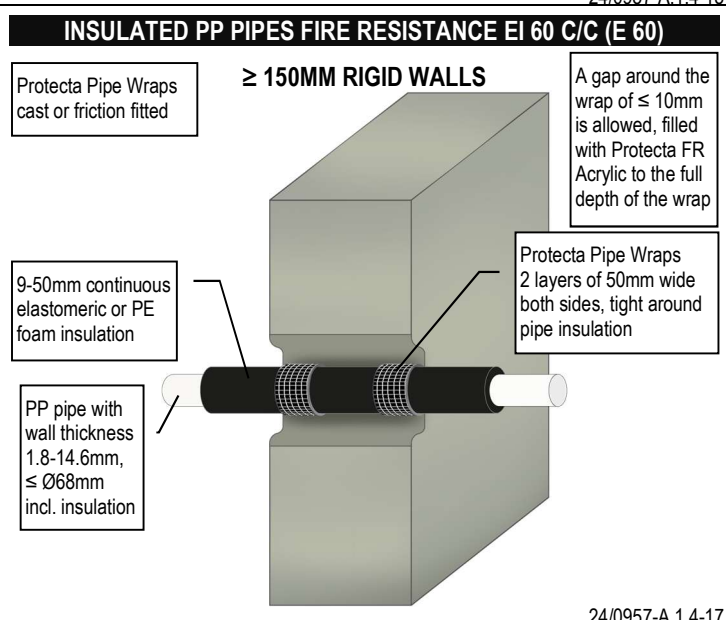
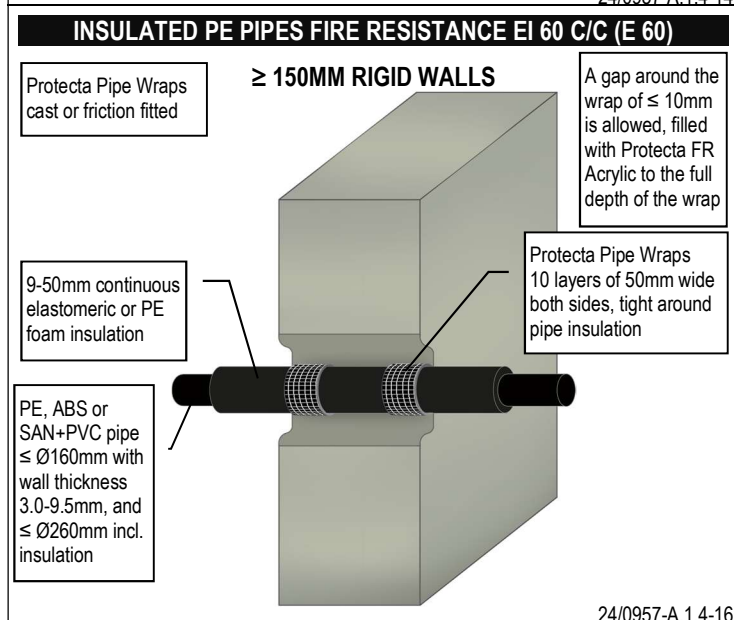
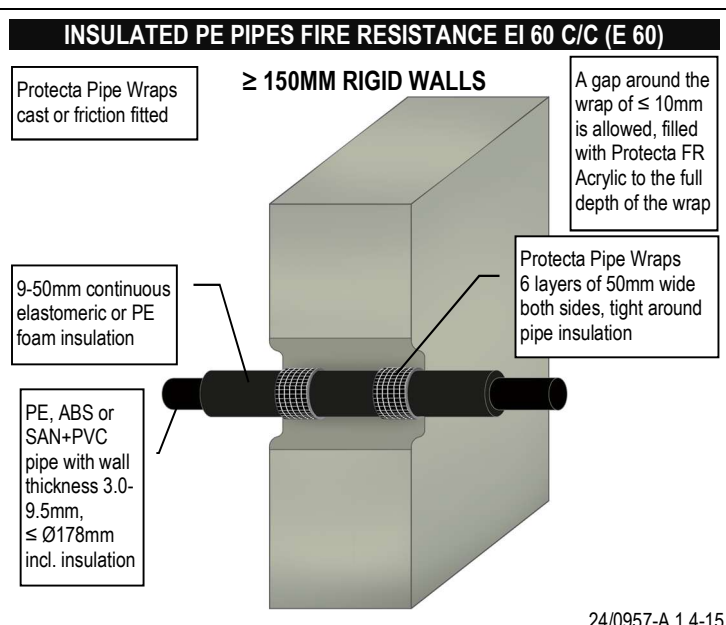
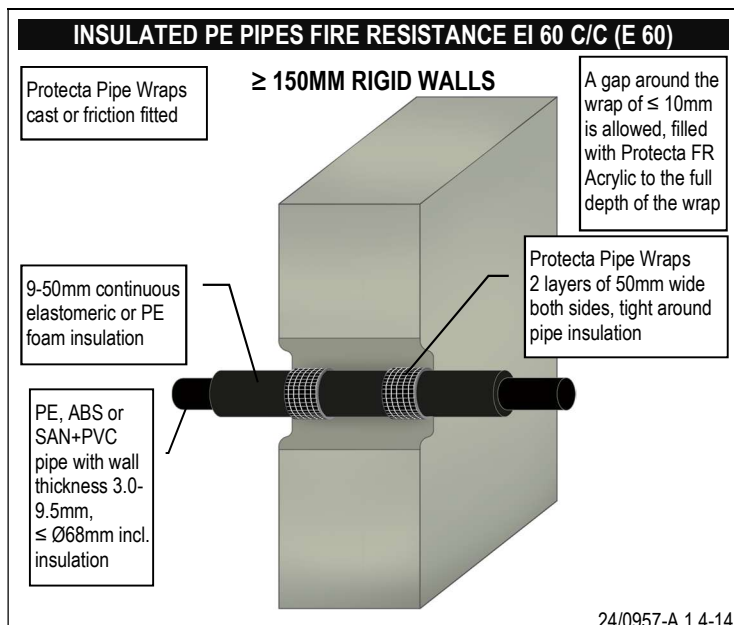
24/0957-A.1.1-6

PLASTIC CONDUIT FIRE RESISTANCE EI 120 U/C (E 120)

≥ 150MM RIGID WALLS

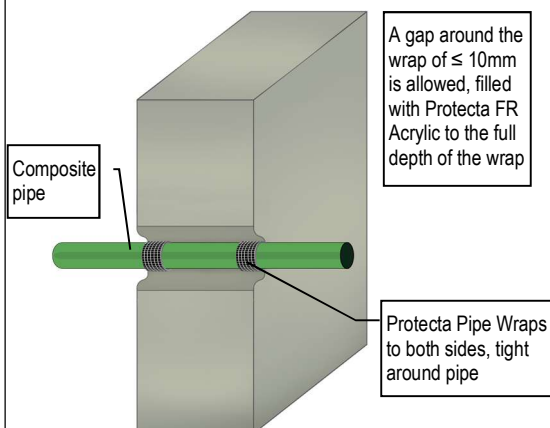
Protecta Pipe Wraps
cast or friction fittedPVC pipe with wall
thickness 1.0-6.6mm, PE
pipe 2.0-10.0mm or PP
pipe 1.8-10.0mmPVC, PE or PP pipe
≤ Ø110mm, with cables
≤ Ø14mm single or in a
bundleA gap around the
wrap of ≤ 10mm
is allowed, filled
with Protecta FR
Acrylic to the full
depth of the wrapProtecta Pipe Wraps
2 layers of 50mm wide
both sides, tight around
conduit

24/0957-A.1.1-5



COMPOSITE AQUATHERM GREEN SDR9 PLASTIC PIPES FIRE RESISTANCE EI 90

≥ 150MM RIGID WALLS

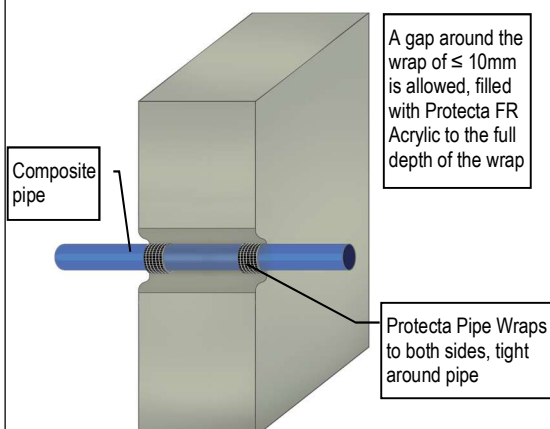
Protecta Pipe Wraps
cast or friction fitted

Services	FR Pipe Wrap	Classification
Ø 32mm Aquatherm Green SDR9 pipes	50 x 1.8mm (1 layer)	EI 90 C/C (E 120 C/C)
Ø 40mm Aquatherm Green SDR9 pipes	50 x 3.6mm (2 layers)	EI 90 C/C (E 120 C/C)
Ø 50mm Aquatherm Green SDR9 pipes	50 x 3.6mm (2 layers)	EI 90 C/C (E 120 C/C)
Ø 63mm Aquatherm Green SDR9 pipes	50 x 3.6mm (2 layers)	EI 90 C/C (E 120 C/C)
Ø 75mm Aquatherm Green SDR9 pipes	50 x 3.6mm (2 layers)	EI 90 C/C (E 120 C/C)
Ø 90mm Aquatherm Green SDR9 pipes	50 x 3.6mm (2 layers)	EI 90 C/C (E 120 C/C)
Ø 110mm Aquatherm Green SDR9 pipes	50 x 3.6mm (2 layers)	EI 90 C/C (E 120 C/C)

24/0957-A.1.2-7

COMPOSITE BLUEPOWER PLASTIC PIPES FIRE RESISTANCE EI 90

≥ 150MM RIGID WALLS

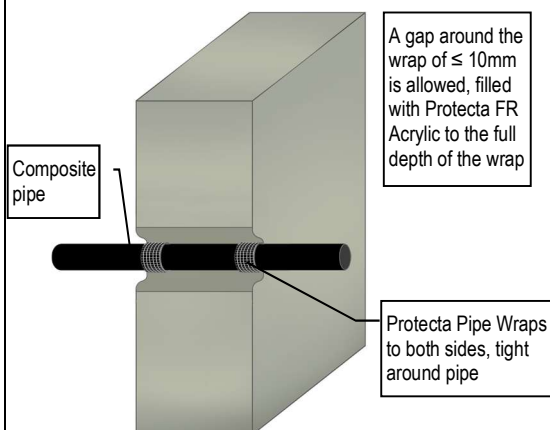
Protecta Pipe Wraps
cast or friction fitted

Services	FR Pipe Wrap	Classification
Ø 32mm BluePower pipes	50 x 3.6mm (2 layers)	EI 90 U/U (E 90 U/U)
Ø 40mm BluePower pipes	50 x 3.6mm (2 layers)	EI 90 U/U (E 90 U/U)
Ø 50mm BluePower pipes	50 x 3.6mm (2 layers)	EI 90 U/U (E 90 U/U)
Ø 75mm BluePower pipes	50 x 3.6mm (2 layers)	EI 90 C/U (E 90 C/U)
Ø 90mm BluePower pipes	50 x 3.6mm (2 layers)	EI 90 C/U (E 90 C/U)
Ø 110mm BluePower pipes	50 x 3.6mm (2 layers)	EI 90 C/U (E 90 C/U)
Ø 125mm BluePower pipes	50 x 10.8mm (6 layers)	EI 90 U/C (E 90 U/C)
Ø 160mm BluePower pipes	50 x 10.8mm (6 layers)	EI 90 U/C (E 90 U/C)

24/0957-A.1.2-4

COMPOSITE GEBERIT SILENT-PP PIPES FIRE RESISTANCE EI 90-120

≥ 150MM RIGID WALLS

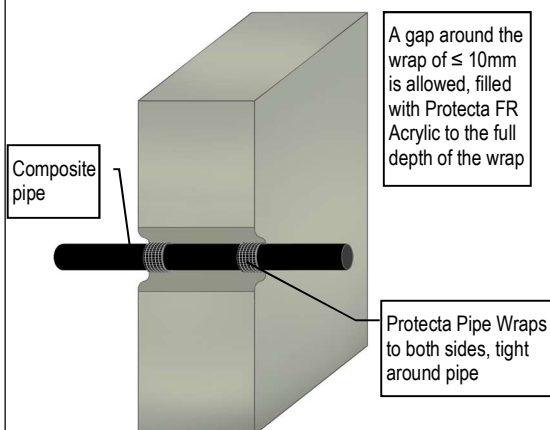
Protecta Pipe Wraps
cast or friction fitted

Services	FR Pipe Wrap	Classification
Ø 32mm Geberit Silent-PP pipes	50 x 3.6mm (2 layers)	EI 120 U/U (E 120 U/U)
Ø 40mm Geberit Silent-PP pipes	50 x 3.6mm (2 layers)	EI 120 U/U (E 120 U/U)
Ø 50mm Geberit Silent-PP pipes	50 x 3.6mm (2 layers)	EI 120 U/U (E 120 U/U)
Ø 75mm Geberit Silent-PP pipes	50 x 3.6mm (2 layers)	EI 120 U/C (E 120 U/C)
Ø 90mm Geberit Silent-PP pipes	50 x 3.6mm (2 layers)	EI 120 U/C (E 120 U/C)
Ø 110mm Geberit Silent-PP pipes	50 x 3.6mm (2 layers)	EI 120 U/C (E 120 U/C)
Ø 125mm Geberit Silent-PP pipes	50 x 10.8mm (6 layers)	EI 90 U/C (E 90 U/C)
Ø 160mm Geberit Silent-PP pipes	50 x 10.8mm (6 layers)	EI 90 U/C (E 90 U/C)

24/0957-A.1.2-10

COMPOSITE HULIOT ULTRA SILENT PIPES FIRE RESISTANCE EI 90

≥ 150MM RIGID WALLS

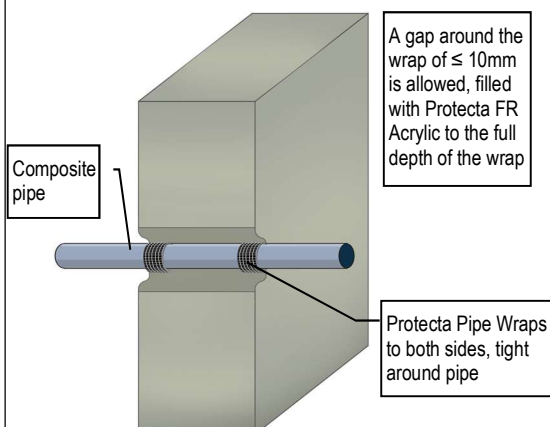
Protecta Pipe Wraps
cast or friction fitted

Services	FR Pipe Wrap	Classification
Ø 32mm Huliote Ultra Silent pipes	50 x 3.6mm (2 layers)	EI 90 U/U (E 120 U/U)
Ø 40mm Huliote Ultra Silent pipes	50 x 3.6mm (2 layers)	EI 90 U/U (E 120 U/U)
Ø 50mm Huliote Ultra Silent pipes	50 x 3.6mm (2 layers)	EI 90 U/U (E 120 U/U)
Ø 75mm Huliote Ultra Silent pipes	50 x 3.6mm (2 layers)	EI 90 U/C (E 90 U/C)
Ø 90mm Huliote Ultra Silent pipes	50 x 3.6mm (2 layers)	EI 90 U/C (E 90 U/C)
Ø 110mm Huliote Ultra Silent pipes	50 x 3.6mm (2 layers)	EI 90 U/C (E 90 U/C)
Ø 125mm Huliote Ultra Silent pipes	50 x 10.8mm (6 layers)	EI 90 U/C (E 90 U/C)
Ø 160mm Huliote Ultra Silent pipes	50 x 10.8mm (6 layers)	EI 90 U/C (E 120 C/C)
Ø 200mm Huliote Ultra Silent pipes	50 x 10.8mm (6 layers)	EI 90 C/C (E 120 C/C)

24/0957-A.1.2-11

COMPOSITE POLO-KAL NG PLASTIC PIPES FIRE RESISTANCE EI 120

≥ 150MM RIGID WALLS

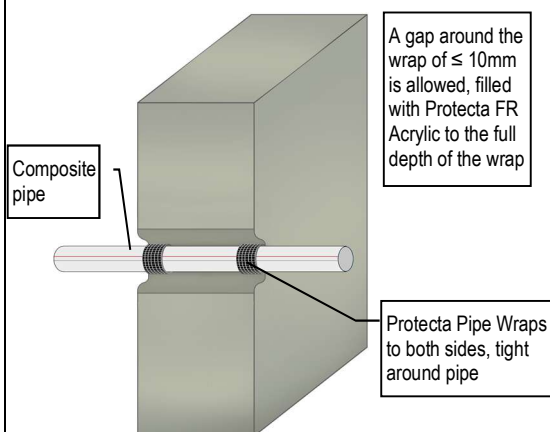
Protecta Pipe Wraps
cast or friction fitted

Services	FR Pipe Wrap	Classification
Ø 32mm Polo-Kal NG pipes	50 x 3.6mm (2 layers)	EI 120 U/U (E 120 U/U)
Ø 40mm Polo-Kal NG pipes	50 x 3.6mm (2 layers)	EI 120 U/U (E 120 U/U)
Ø 50mm Polo-Kal NG pipes	50 x 3.6mm (2 layers)	EI 120 U/U (E 120 U/U)
Ø 75mm Polo-Kal NG pipes	50 x 3.6mm (2 layers)	EI 120 U/C (E 120 U/C)
Ø 90mm Polo-Kal NG pipes	50 x 3.6mm (2 layers)	EI 120 U/C (E 120 U/C)
Ø 110mm Polo-Kal NG pipes	50 x 3.6mm (2 layers)	EI 120 U/C (E 120 U/C)
Ø 125mm Polo-Kal NG pipes	50 x 7.2mm (4 layers)	EI 120 U/C (E 120 U/C)
Ø 160mm Polo-Kal NG pipes	50 x 10.8mm (6 layers)	EI 120 U/C (E 120 U/C)

24/0957-A.1.2-6

COMPOSITE REHAU RAUPIANO PLUS PLASTIC PIPES FIRE RESISTANCE EI 120

≥ 150MM RIGID WALLS

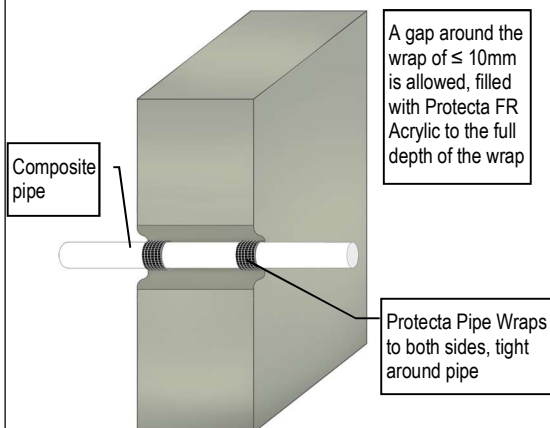
Protecta Pipe Wraps
cast or friction fitted

Services	FR Pipe Wrap	Classification
Ø 40mm Rehau Raupiano Plus pipes	50 x 3.6mm (2 layers)	EI 120 U/U (E 120 U/U)
Ø 50mm Rehau Raupiano Plus pipes	50 x 3.6mm (2 layers)	EI 120 U/U (E 120 U/U)
Ø 75mm Rehau Raupiano Plus pipes	50 x 3.6mm (2 layers)	EI 120 U/C (E 120 U/C)
Ø 90mm Rehau Raupiano Plus pipes	50 x 3.6mm (2 layers)	EI 120 U/C (E 120 U/C)
Ø 110mm Rehau Raupiano Plus pipes	50 x 3.6mm (2 layers)	EI 120 U/C (E 120 U/C)
Ø 125mm Rehau Raupiano Plus pipes	50 x 7.2mm (4 layers)	EI 120 U/C (E 120 U/C)
Ø 160mm Rehau Raupiano Plus pipes	50 x 10.8mm (6 layers)	EI 120 U/C (E 120 U/C)

24/0957-A.1.2-5

COMPOSITE UPONOR DECIBEL PLASTIC PIPES FIRE RESISTANCE EI 90

≥ 150MM RIGID WALLS

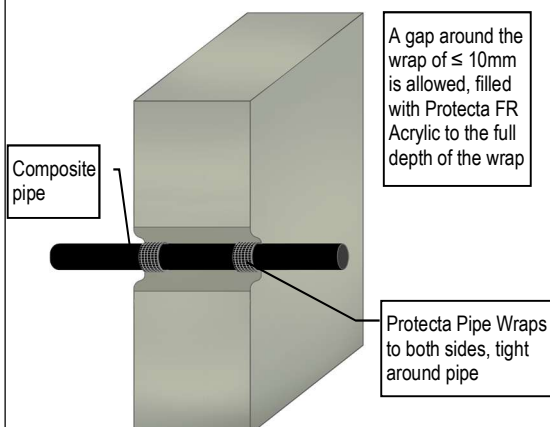
Protecta Pipe Wraps
cast or friction fitted

Services	FR Pipe Wrap	Classification
Ø 50mm Uponor Decibel pipes	50 x 3.6mm (2 layers)	EI 90 U/U (E 90 U/U)
Ø 75mm Uponor Decibel pipes	50 x 3.6mm (2 layers)	EI 90 U/C (E 90 U/C)
Ø 110mm Uponor Decibel pipes	50 x 3.6mm (2 layers)	EI 90 U/C (E 90 U/C)

24/0957-A.1.2-3

COMPOSITE VALSIR BLACKFIRE PIPES FIRE RESISTANCE EI 0-120

≥ 150MM RIGID WALLS

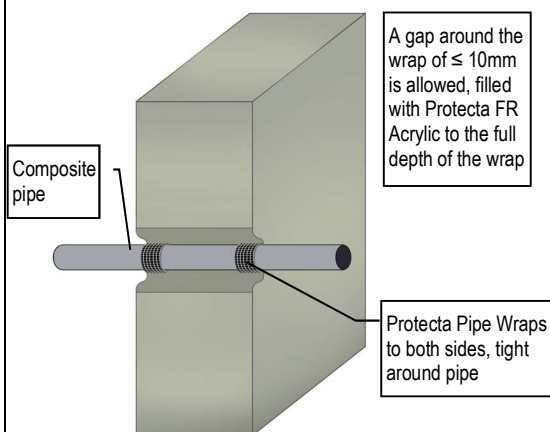
Protecta Pipe Wraps
cast or friction fitted

Services	FR Pipe Wrap	Classification
Ø 32mm Valsir Blackfire pipes	50 x 3.6mm (2 layers)	(E 120 U/U)
Ø 40mm Valsir Blackfire pipes	50 x 3.6mm (2 layers)	(E 120 U/U)
Ø 50mm Valsir Blackfire pipes	50 x 3.6mm (2 layers)	(E 120 U/U)
Ø 75mm Valsir Blackfire pipes	50 x 3.6mm (2 layers)	EI 120 U/C (E 120 U/C)
Ø 90mm Valsir Blackfire pipes	50 x 3.6mm (2 layers)	EI 120 U/C (E 120 U/C)
Ø 110mm Valsir Blackfire pipes	50 x 3.6mm (2 layers)	EI 120 U/C (E 120 U/C)
Ø 125mm Valsir Blackfire pipes	50 x 10.8mm (6 layers)	EI 120 U/C (E 120 U/C)
Ø 160mm Valsir Blackfire pipes	50 x 10.8mm (6 layers)	EI 120 U/C (E 120 U/C)

24/0957-A.1.2-13

COMPOSITE VALSIR PP3 PIPES FIRE RESISTANCE EI 20-120

≥ 150MM RIGID WALLS

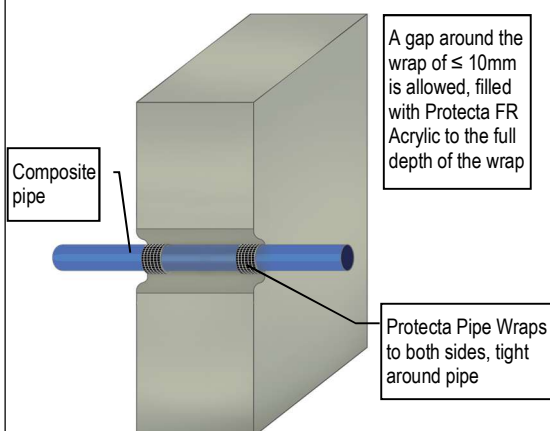
Protecta Pipe Wraps
cast or friction fitted

Services	FR Pipe Wrap	Classification
Ø 32mm Valsir PP3 pipes	50 x 3.6mm (2 layers)	EI 20 U/U (E 120 U/U)
Ø 40mm Valsir PP3 pipes	50 x 3.6mm (2 layers)	EI 20 U/U (E 120 U/U)
Ø 50mm Valsir PP3 pipes	50 x 3.6mm (2 layers)	EI 20 U/U (E 120 U/U)
Ø 75mm Valsir PP3 pipes	50 x 3.6mm (2 layers)	EI 120 U/C (E 120 U/C)
Ø 90mm Valsir PP3 pipes	50 x 3.6mm (2 layers)	EI 120 U/C (E 120 U/C)
Ø 110mm Valsir PP3 pipes	50 x 3.6mm (2 layers)	EI 120 U/C (E 120 U/C)
Ø 125mm Valsir PP3 pipes	50 x 10.8mm (6 layers)	EI 120 U/C (E 120 U/C)
Ø 160mm Valsir PP3 pipes	50 x 10.8mm (6 layers)	EI 120 U/C (E 120 U/C)

24/0957-A.1.2-12

COMPOSITE VALSIR TRIPLUS PLASTIC PIPES FIRE RESISTANCE EI 0-120

≥ 150MM RIGID WALLS

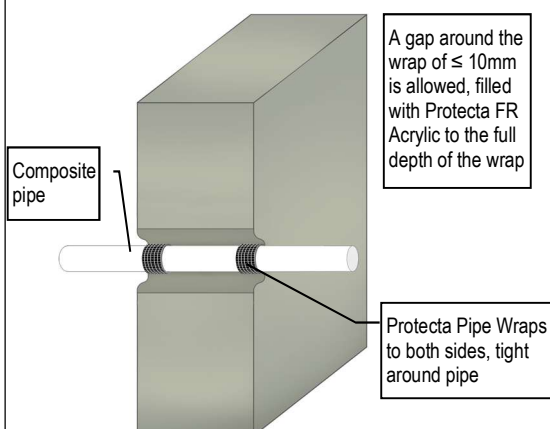
Protecta Pipe Wraps
cast or friction fitted

Services	FR Pipe Wrap	Classification
Ø 32mm Valsir Triplus pipes	50 x 3.6mm (2 layers)	(E 120 U/U)
Ø 40mm Valsir Triplus pipes	50 x 3.6mm (2 layers)	(E 120 U/U)
Ø 50mm Valsir Triplus pipes	50 x 3.6mm (2 layers)	(E 120 U/U)
Ø 75mm Valsir Triplus pipes	50 x 3.6mm (2 layers)	EI 90 U/C (E 120 U/C)
Ø 90mm Valsir Triplus pipes	50 x 3.6mm (2 layers)	EI 90 U/C (E 120 U/C)
Ø 110mm Valsir Triplus pipes	50 x 3.6mm (2 layers)	EI 90 U/C (E 120 U/C)
Ø 125mm Valsir Triplus pipes	50 x 10.8mm (6 layers)	EI 90 U/C (E 120 U/C)
Ø 160mm Valsir Triplus pipes	50 x 10.8mm (6 layers)	EI 120 U/C (E 120 U/C)

24/0957-A.1.2-14

COMPOSITE WAVIN AS+ PLASTIC PIPES FIRE RESISTANCE EI 90

≥ 150MM RIGID WALLS

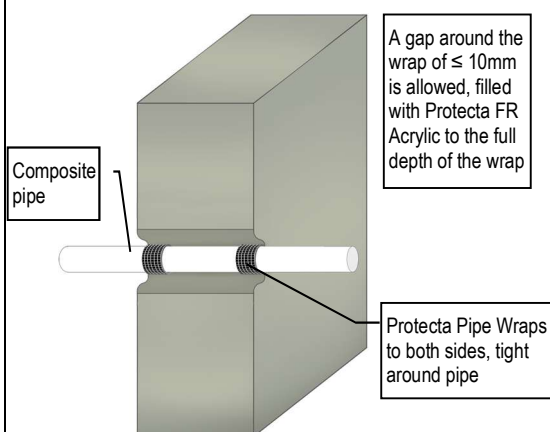
Protecta Pipe Wraps
cast or friction fitted

Services	FR Pipe Wrap	Classification
Ø 50mm Wavin AS+ pipes	50 x 3.6mm (2 layers)	EI 90 U/C (E 120 U/C)
Ø 75mm Wavin AS+ pipes	50 x 3.6mm (2 layers)	EI 90 U/C (E 120 U/C)
Ø 90mm Wavin AS+ pipes	50 x 3.6mm (2 layers)	EI 90 U/C (E 120 U/C)
Ø 110mm Wavin AS+ pipes	50 x 3.6mm (2 layers)	EI 90 U/C (E 120 U/C)
Ø 125mm Wavin AS+ pipes	50 x 10.8mm (6 layers)	EI 90 C/C (E 90 C/C)
Ø 160mm Wavin AS+ pipes	50 x 10.8mm (6 layers)	EI 90 C/C (E 90 C/C)
Ø 200mm Wavin AS+ pipes	50 x 10.8mm (6 layers)	EI 90 C/C (E 90 C/C)

24/0957-A.1.2-9

COMPOSITE WAVIN SITECH PLASTIC PIPES FIRE RESISTANCE EI 60-90

≥ 150MM RIGID WALLS

Protecta Pipe Wraps
cast or friction fitted

Services	FR Pipe Wrap	Classification
Ø 32mm Wavin SiTech pipes	50 x 3.6mm (2 layers)	EI 90 U/U (E 120 U/U)
Ø 40mm Wavin SiTech pipes	50 x 3.6mm (2 layers)	EI 90 U/U (E 120 U/U)
Ø 50mm Wavin SiTech pipes	50 x 3.6mm (2 layers)	EI 90 U/U (E 120 U/U)
Ø 75mm Wavin SiTech pipes	50 x 3.6mm (2 layers)	EI 60 U/C (E 120 U/C)
Ø 90mm Wavin SiTech pipes	50 x 3.6mm (2 layers)	EI 60 U/C (E 120 U/C)
Ø 110mm Wavin SiTech pipes	50 x 3.6mm (2 layers)	EI 60 U/C (E 120 U/C)

24/0957-A.1.2-8

